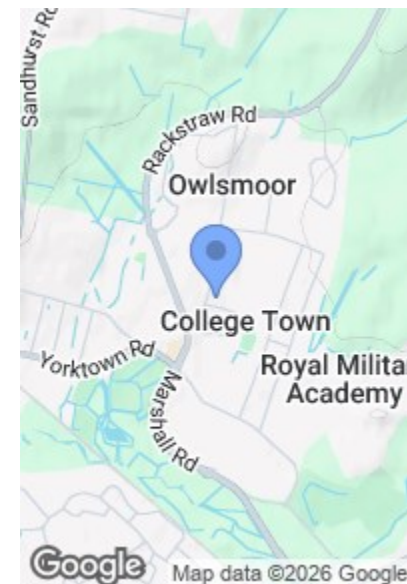




ROAD MAP

HYBRID MAP

TERRAIN MAP



BITTERN CLOSE, COLLEGE TOWN, SANDHURST GU47
OFFERS IN EXCESS OF £150,000

Camberley 01276 539111
Email: enquiries@knightspropertyservices.com
54 Obelisk Way, Camberley, Surrey GU15 3SG
www.knightspropertyservices.com



Energy Efficiency Rating		
	Current	Potential
Very energy efficient - lower running costs		
(92 plus) A		
(81-91) B		
(69-80) C		
(55-68) D		
(39-54) E		
(21-38) F		
(1-20) G		
Not energy efficient - higher running costs		
England & Wales	67	75
EU Directive 2002/91/EC		



1



1



1





MAIN FEATURES

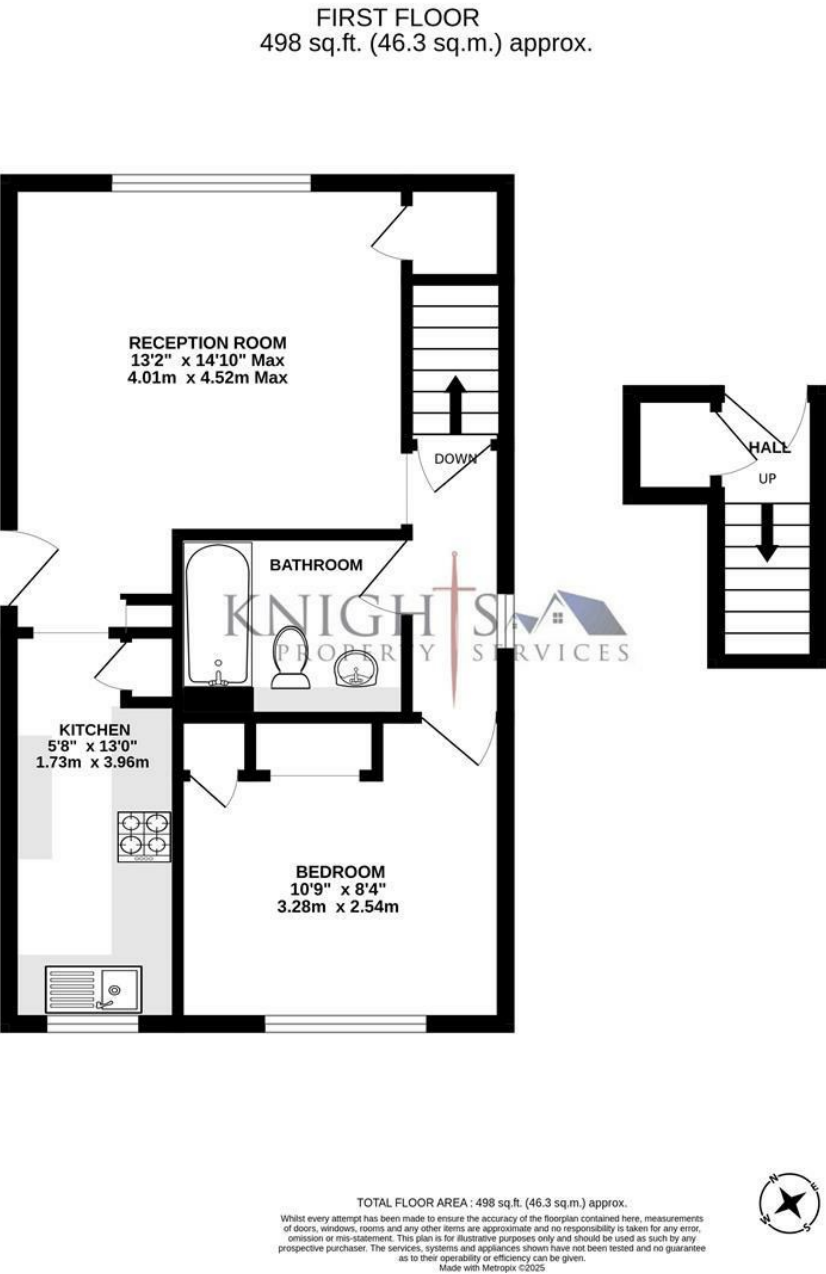
- No Onward Chain
- One Double Bedroom
- Garage In A Block
- Good Commuter Links
- First Floor Maisonette
- One Allocated Parking Space
- Garden Space
- Close To Local Amenities

FULL DETAILS

Council Tax
Band B.

Leasehold Information
We have been advised by the current owner that there is approximately 111 years left on the lease. There is currently no service charge and the current ground rent is approximately £200 per annum. Knights Property Services can not be held liable for any inaccuracy in this as we are relying on third party information.

FLOORPLAN



BITTERN CLOSE, COLLEGE TOWN, SANDHURST GU47

KNIGHTS PROPERTY SERVICES ****NO ONWARD CHAIN**** New to the market for sale is this first floor maisonette on Bittern Close, which is situated close to good transport links and a great range of local amenities including The Meadows Shopping Centre. The property comprising; reception room, kitchen, one double bedroom and a bathroom. Additional features to mention include; a garage in a block, one allocated parking space and a rear garden. The property is in need of some modernisation and is being sold with no onward chain.