

ROAD MAP

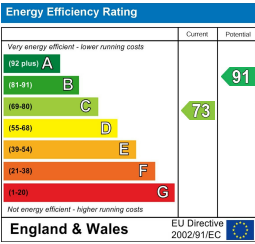
HYBRID MAP

TERRAIN MAP



HUNGERFORD CLOSE, SANDHURST GU47
OFFERS IN EXCESS OF £325,000

Camberley 01276 539111
Email: enquiries@knightspropertyservices.com
54 Obelisk Way, Camberley, Surrey GU15 3SG
www.knightspropertyservices.com





MAIN FEATURES

- Well Presented Terrace Property
- Two Bedrooms
- Low Maintenance Garden
- Good Commuter Links
- Cul-De-Sac Setting
- Modern Kitchen
- Three Allocated Parking Spaces
- Close To Sandhurst's Amenities

FULL DETAILS

Entrance

Enter via front door and laminate flooring.

Reception Room

Laminate flooring and carpeted stairs leading to the first floor.

Kitchen

Range of base and eye level units, boiler, sink, gas hob, oven, extractor fan and space for; washing machine and fridge/freezer. Partly tiled walls, vinyl flooring and door leading to the rear garden.

First Floor Landing

Carpet flooring and access to the loft via hatch.

Bedroom One

Front aspect, storage and laminate flooring.

Bedroom Two

Rear aspect and carpet flooring.

Bathroom

Bath with shower, low level WC, wash hand basin, storage cupboard and vinyl flooring.

To The Rear

Mainly laid to artificial lawn with decking area. Gate leading to the parking.

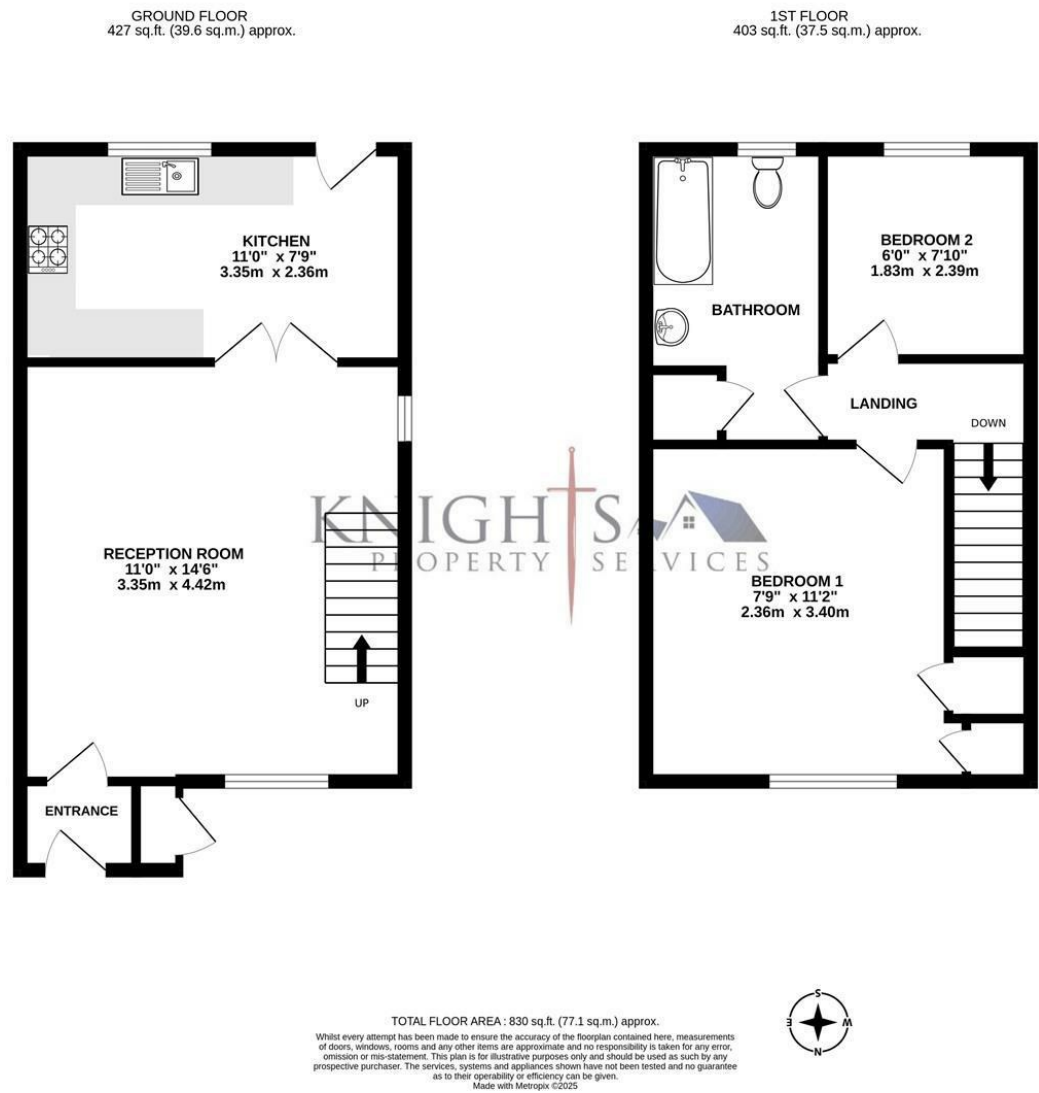
To The Front

Lawned area and path leading to the front door.

Council Tax

Band C.

FLOORPLAN



HUNGERFORD CLOSE, SANDHURST GU47

KNIGHTS PROPERTY SERVICES - New to the market for sale is this well presented end of terrace property in Hungerford Close, ideally situated for Sandhurst's amenities, including the Meadows shopping centre, Memorial Park and Swinley Forest. The home is situated within a cul-de-sac setting with the ground floor comprising; reception room leading to the modern kitchen with access onto the low maintenance garden. There are two good-sized bedrooms to the first floor and a bathroom. A standout feature is that it comes with three allocated parking spaces, adjacent to the property.