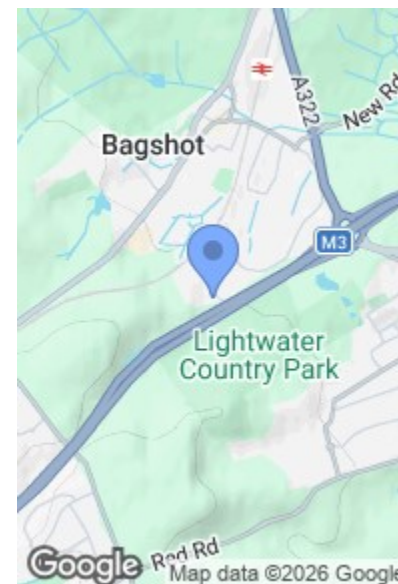
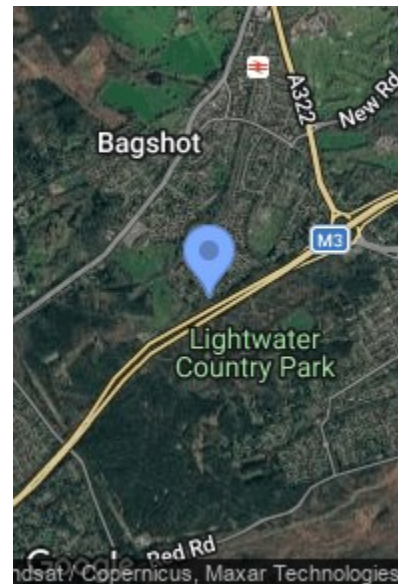
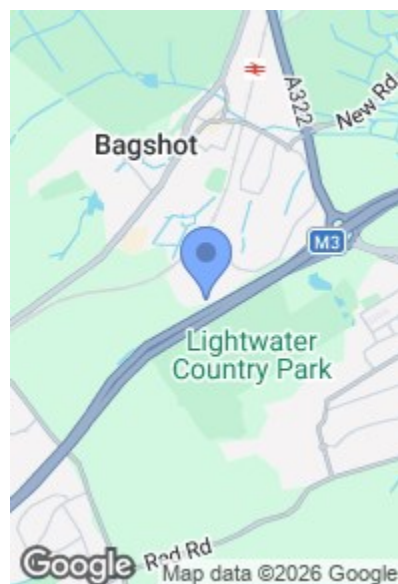


ROAD MAP

HYBRID MAP

TERRAIN MAP

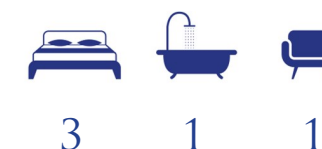


ARTHUR CLOSE, BAGSHOT GU19
OFFERS IN EXCESS OF £425,000

Camberley 01276 539111
Email: enquiries@knightsproperty.com
54 Obelisk Way, Camberley, Surrey GU15 3SG
www.knightsproperty.com



Energy Efficiency Rating		Current	Potential
Very energy efficient - lower running costs			
A	92-100		87
B	81-91		
C	69-80		
D	55-68	68	
E	39-54		
F	21-38		
G	1-20		
Not energy efficient - higher running costs			
England & Wales		EU Directive 2002/91/EC	

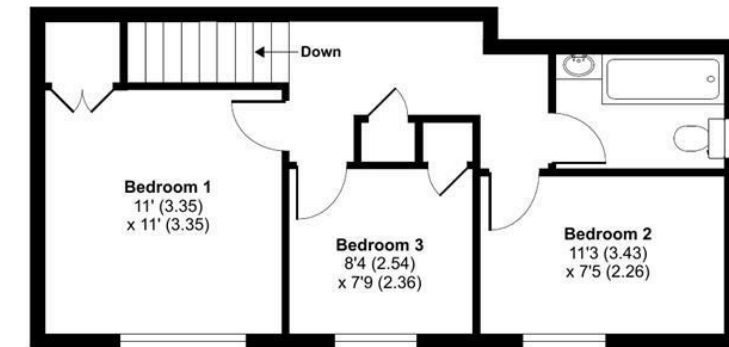




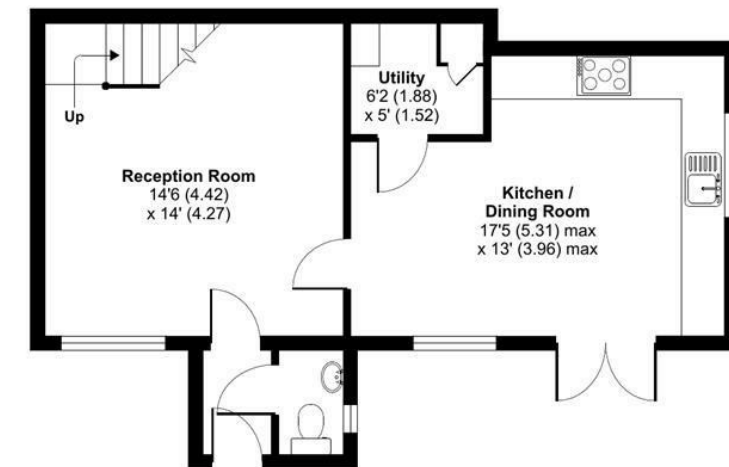
FLOORPLAN

Arthur Close, Bagshot, GU19

Approximate Area = 915 sq ft / 85 sq m
For identification only - Not to scale



FIRST FLOOR



GROUND FLOOR

 Floor plan produced in accordance with RICS Property Measurement Standards incorporating International Property Measurement Standards (IPMS2 Residential). © ritchcom 2024. Produced for Knights Property Services. REF: 1088558 

MAIN FEATURES

- End Terrace Home
- Three Good-Size Bedrooms
- New Kitchen
- Modern Bathroom
- Cul-De-Sac Setting
- Well Maintained External Area
- Good Commuter Links
- Very Well Presented

FULL DETAILS

Entrance Hallway

Enter via front door with door leading through to;

WC

Low level WC and wash hand basin with storage below.

Reception Room

14'6 x 14'0 (4.42m x 4.27m)

Front aspect, stairs leading to the first floor and carpet flooring.

Kitchen/Dining Room

17'5 x 13'0 (5.31m x 3.96m)

Fitted with a range of base and eye level units, sink, five ring gas hob, extractor fan, oven, dishwasher, fridge/freezer and laminate flooring. Doors leading to the front.

Utility

6'2 x 5'0 (1.88m x 1.52m)

Storage units, laminate flooring and space for; washing machine and tumble dryer.

First Floor Landing

Cupboard and carpet flooring.

Bedroom One

11'0 x 11'0 (3.35m x 3.35m)

Front aspect, wall panelling, storage cupboard and carpet flooring.

Bedroom Two

11'3 x 7'5 (3.43m x 2.26m)

Front aspect and laminate flooring.

Bedroom Three

8'4 x 7'9 (2.54m x 2.36m)

Front aspect, wall panelling, airing cupboard and carpet flooring.

Bathroom

Bath with shower, low level WC, wash hand basin with storage below, heated towel rail, partly tiled walls and tiled flooring.

Externally

Patio area, area laid to artificial lawn and new fencing.

Council Tax

Band C.

ARTHUR CLOSE, BAGSHOT GU19

KNIGHTS PROPERTY SERVICES - Situated within a quiet cul-de-sac in the popular Connaught Park development, is this very well presented three bedroom property, built by Charles Church to their Sinclair design. The ground floor comprising; reception room, WC and modern kitchen/dining room with separate utility. There are three good-size bedrooms and a modern bathroom to the first floor. The property has undergone improvements by the current owners including redecoration, a new kitchen, new artificial lawn and new fence panels. The home is close to Bagshot village with its wide range of amenities along with a large Waitrose nearby. The area has excellent access on to the M3, M25, A322 and A30.