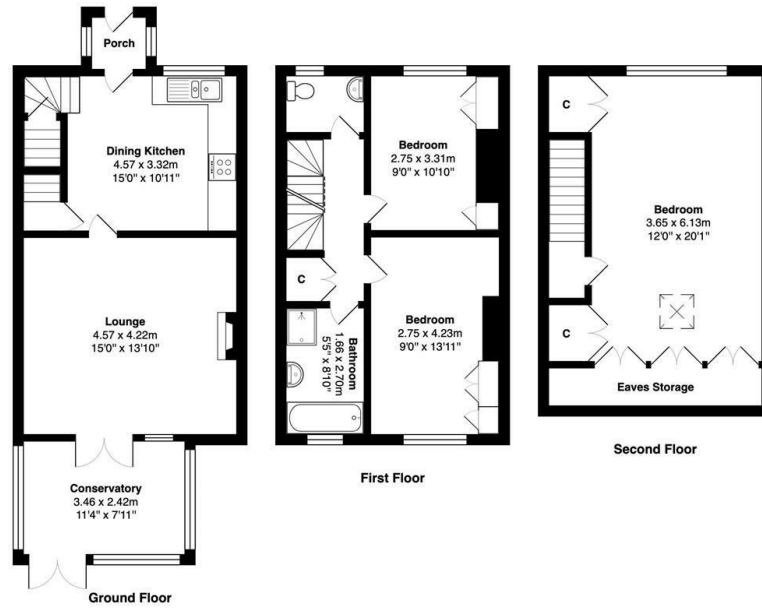




Building Plot, Jessamine Place, Cross Hills, BD20 7RP

£275,000

- FULL PLANNING PERMISSION FOR ADJOINING THREE-BED HOUSE
- CHARMING THREE BEDROOM PROPERTY
- SOLID ROOF CONSERVATORY
- PEACEFUL LOCATION
- OFF-ROAD PARKING
- MODERN, WELL-EQUIPPED DINING KITCHEN
- ARRANGED OVER THREE FLOORS
- GENEROUS GARDENS TO SIDE & REAR
- GENEROUS SITTING ROOM WITH FEATURE FIREPLACE
- SPACIOUS DORMER BEDROOM WITH VELUX WINDOW



Total Area: 113.1 m² ... 1218 ft²
 All measurements are approximate and for display purposes only



Directions

Viewings

Viewings by arrangement only. Call 01535 636238 to make an appointment.

Council Tax Band

B

EPC Rating:

C

Energy Efficiency Rating		Current	Potential
<i>Very energy efficient - lower running costs</i>			
(92 plus)	A		
(81-91)	B		87
(69-80)	C	69	
(55-68)	D		
(39-54)	E		
(21-38)	F		
(1-20)	G		
<i>Not energy efficient - higher running costs</i>			
England & Wales		EU Directive 2002/91/EC	