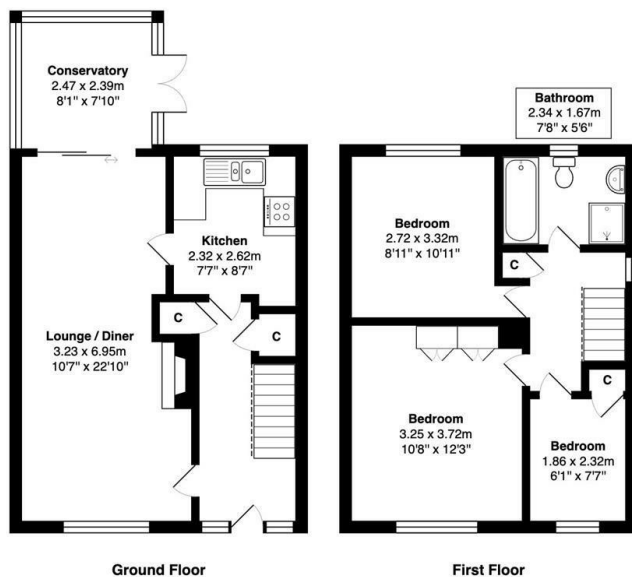




11 Coppy Road, Steeton, BD20 6PJ

Offers Over £225,000

- NO UPPER CHAIN
- CONSERVATORY
- GARDENS TO FRONT & REAR
- SOUGHT AFTER LOCATION
- SEMI-DETACHED PROPERTY
- SINGLE GARAGE
- IN NEED OF MODERNISATION
- THREE BEDROOMS
- PRIVATE DRIVEWAY
- BACKING ON TO OPEN FIELDS



Total Area: 78.9 m² ... 849 ft²

All measurements are approximate and for display purposes only



Directions

Viewings

Viewings by arrangement only. Call 01535 636238 to make an appointment.

Council Tax Band

C

EPC Rating:

E

Energy Efficiency Rating		
	Current	Potential
Very energy efficient - lower running costs		
(92 plus) A		85
(81-91) B		
(69-80) C		
(55-68) D		
(39-54) E	49	
(21-38) F		
(1-20) G		
Not energy efficient - higher running costs		
England & Wales		EU Directive 2002/91/EC