

ARLINGTON
PARK

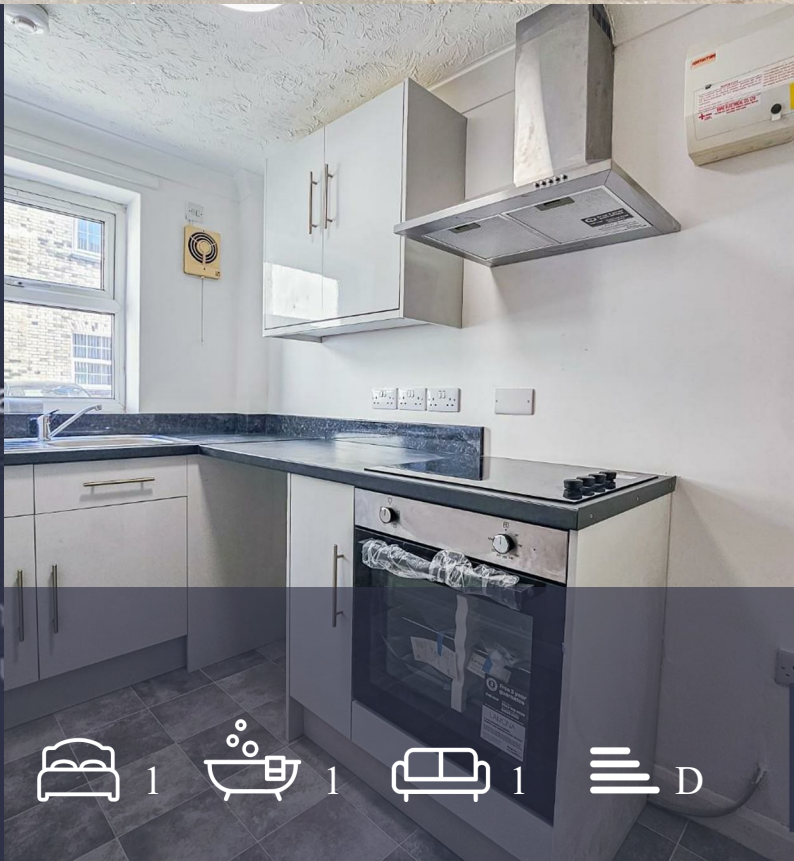


ARLINGTON
PARK

Interested in learning more or scheduling a viewing? Click "Email Agent" or "Request Information" on this listing.

Park Lodge Crown Road
Great Yarmouth, NR30 2JN

£720 Per Month



1 1 1 D

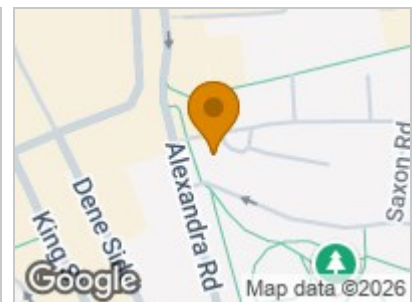
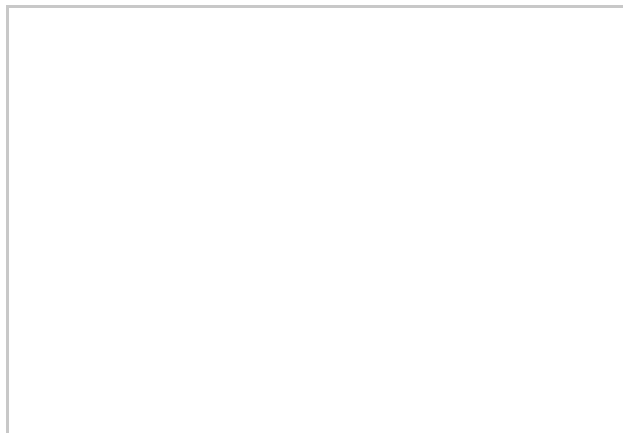
ZERO DEPOSIT OPTION AVAILABLE Arlington Park are pleased to present this one bedroom apartment which offers modern accommodation. The apartment is within walking distance of Great Yarmouth High Street and Seafront and overlooks St Georges Park to the front.



ZERO DEPOSIT OPTION AVAILABLE

Arlington Park are pleased to present this one bedroom apartment which offers modern and stylish accommodation. The apartment is within walking distance of Great Yarmouth High Street and Seafront and overlooks St Georges Park to the front.

The property features off-street parking, one bedroom, fitted kitchen and positioned close to many amenities. Available for immediate occupation (Subject to referencing)



Energy Efficiency Rating		
	Current	Potential
Very energy efficient - lower running costs		
(92 plus) A		
(81-91) B		
(69-80) C		
(55-68) D		
(39-54) E		
(21-38) F		
(1-20) G		
Not energy efficient - higher running costs		
	61	77
England & Wales	EU Directive 2002/91/EC	

These particulars, whilst believed to be accurate are set out as a general outline only for guidance and do not constitute any part of an offer or contract. Intending purchasers should not rely on them as statements of representation of fact, but must satisfy themselves by inspection or otherwise as to their accuracy. No person in this firm's employment has the authority to make or give any representation or warranty in respect of the property.