



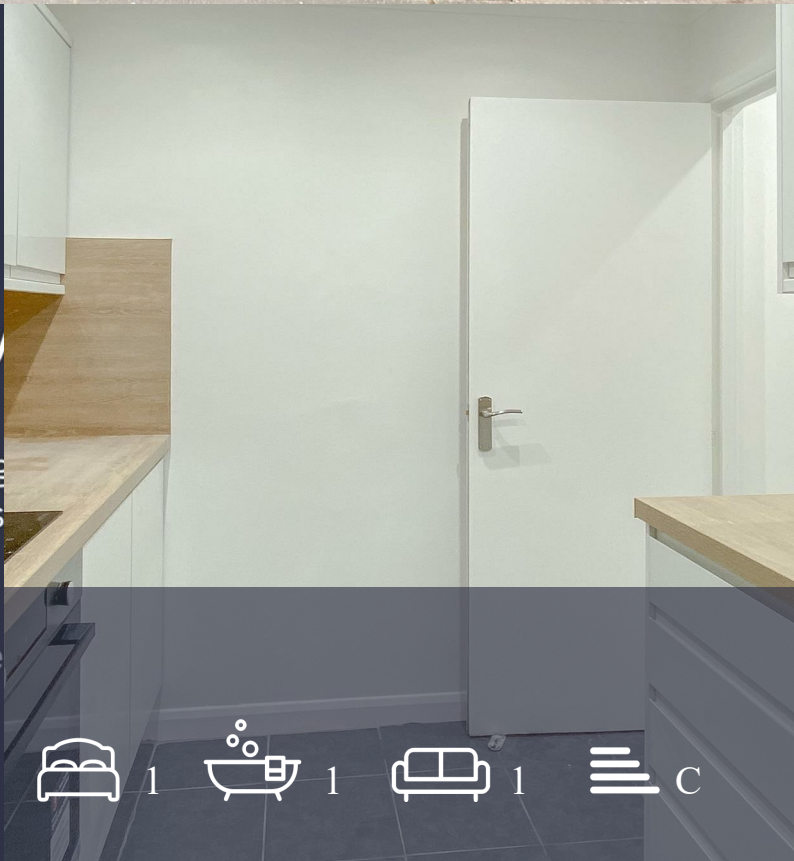
Interested in Viewing This Property

To arrange a viewing, please contact us online through our website. Simply click on "Email Agent" or "Request Information".

Park Lodge Crown Road

Great Yarmouth, NR30 2JN

£715 Per Month



ZERO DEPOSIT OPTION AVAILABLE Arlington Park are pleased to present this newly renovated one bedroom apartment which offers modern and stylish accommodation. The apartment is within walking distance of Great Yarmouth High Street and Seafront and overlooks St Georges Park to the front.

- ZERO DEPOSIT OPTION AVAILABLE
- Available for immediate occupation
- Parking
- Bicycle Storage
- Overlooking St Georges Park
- Close to High Street and Seafront
- Completely Renovated
- One Bedroom



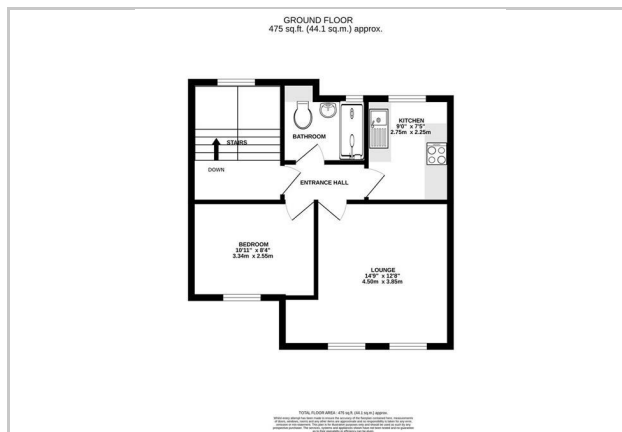
FULL DESCRIPTION

ZERO DEPOSIT OPTION AVAILABLE

Arlington Park are pleased to present this newly renovated one bedroom apartment which offers modern and stylish accommodation. The apartment is within walking distance of Great Yarmouth High Street and Seafront and overlooks St Georges Park to the front.

The property features off-street parking, one bedroom, Newly fitted kitchen and shower room, energy efficient heating and positioned close to many amenities.

Available for immediate occupation (Subject to referencing)



These particulars, whilst believed to be accurate are set out as a general outline only for guidance and do not constitute any part of an offer or contract. Intending purchasers should not rely on them as statements of representation of fact, but must satisfy themselves by inspection or otherwise as to their accuracy. No person in this firm's employment has the authority to make or give any representation or warranty in respect of the property.



Energy Efficiency Rating		Current	Potential
Very energy efficient - lower running costs			
(92 plus)	A		
(81-91)	B		
(69-80)	C		
(55-68)	D		
(39-54)	E		
(21-38)	F		
(1-20)	G		
Not energy efficient - higher running costs			
		74	77
England & Wales		EU Directive 2002/91/EC	