

ARLINGTON  
PARK



7 Bevan Close  
, Norwich, NR5 8NX  
£1,200 Per Month



2 1 1 C



\*\*\*\* STUDENTS ONLY\*\*\*\* Available August 2024 First-floor maisonette offering flexible accommodation, whether you need two bedrooms with spacious living or three dedicated bedrooms

- Garden to the rear
- Flexible layout: Configure as a 2-bedroom with living space or 3 bedrooms
- convenient outside cycle storage
- Convenient location: Steps from UEA, Earlham Park, and close to Norfolk & Norwich Hospital
- Marshland views to the front, charming garden view from the back
- \*\*\*\* STUDENTS ONLY \*\*\*\*



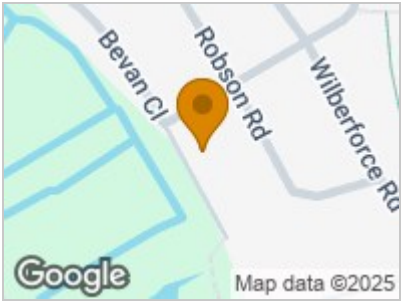
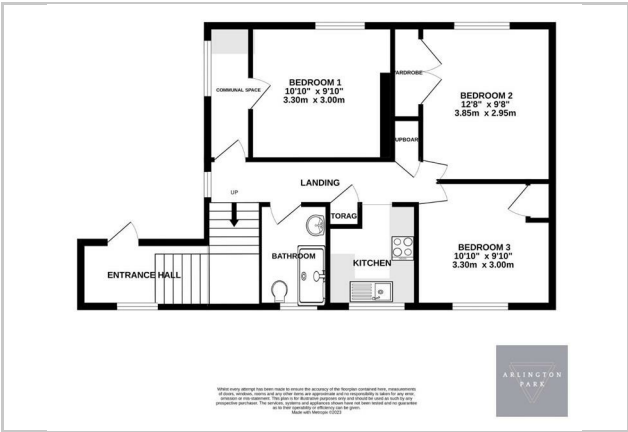
\*\*\*\* STUDENTS ONLY \*\*\*\*  
Available August 2024

FULL DESCRIPTION

This lovely first-floor maisonette offers flexible accommodation, perfect for students seeking a comfortable and convenient home. Whether you need two bedrooms with spacious living or three dedicated bedrooms, this versatile property can adapt to your needs.

Features three rooms. Each can be equipped with a double bed frame and desk, offering comfortable living arrangements.

Enjoy peaceful mornings with marsh views from the front window, and unwind in the evening with delightful garden views from the rear bedroom.



Energy Efficiency Rating		
	Current	Potential
Very energy efficient - lower running costs		
(92 plus) A		
(81-91) B		
(69-80) C	76	76
(55-68) D		
(39-54) E		
(21-38) F		
(1-20) G		
Not energy efficient - higher running costs		
England & Wales		
EU Directive 2002/91/EC		