

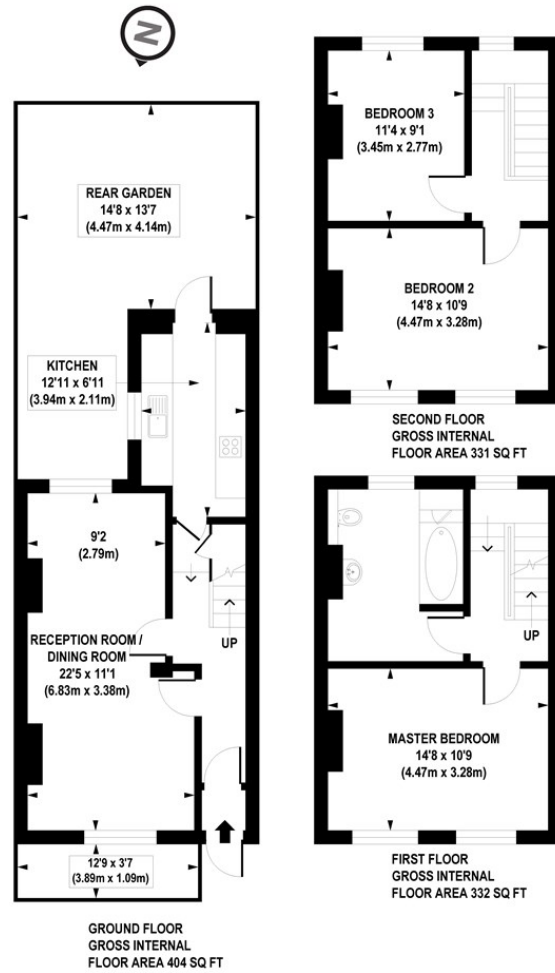


3 Bed
House - Terraced
located in London

£2,800 PCM



 ORLANDO REID
LONDON



APPROX. GROSS INTERNAL FLOOR AREA 1067 sq. ft / 99.13 sq. m

Floorplan is for illustrative purposes only and is not to scale. Every attempt has been made to ensure the accuracy of the floorplan shown, however all measurements, fixtures, fittings and data shown are an approximate interpretation for illustrative purposes only. Liability for errors, omissions or mis-statement through negligence or otherwise is hereby excluded.

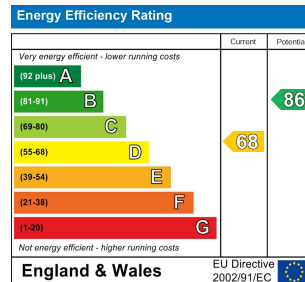
CP CREATIVE
PROPERTY MARKETING

DIRECTIONS

CONTACT

1-3 Old Town
Clapham
London
SW4 0JT

E: lettings@orlandoreid.co.uk
T: 020 7627 3197
www.orlandoreid.co.uk



ORLANDO REID
LONDON