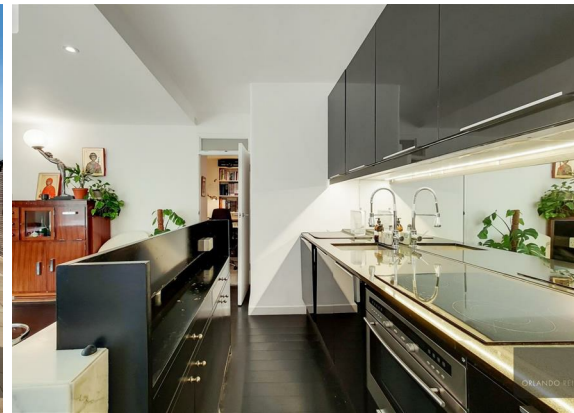




**1 Bed  
Apartment  
located in Barbican**

£2,500 PCM

ORLANDO REID



**ORLANDO REID**  
LONDON

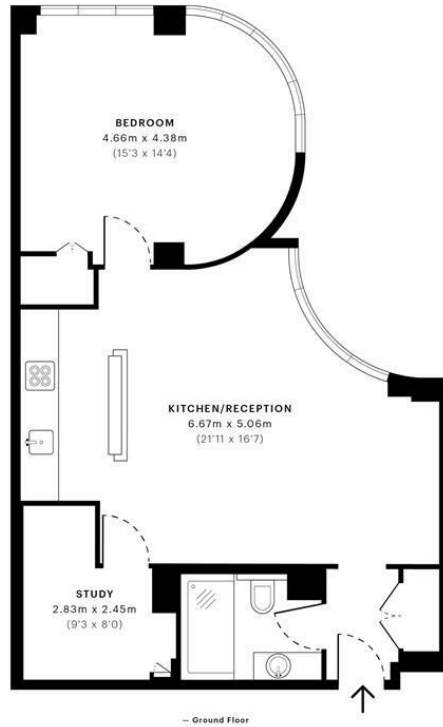


# Florin Court, EC1M

CAPTURE DATE: 01/07/2021 LASER SCAN POINTS: 3,126,961

GROSS INTERNAL AREA

56.87 sqm / 612.14 sqft



	<b>GROSS INTERNAL AREA (GIA)</b> The footprint of the property 56.87 sqm / 612.14 sqft		<b>NET INTERNAL AREA (NIA)</b> Excludes walls and structural features Includes mezzanines, restricted head height 54.13 sqm / 582.65 sqft		<b>EXTERNAL STRUCTURAL FEATURES</b> Balconies, terraces, verandas etc. 0.00 sqm / 0.00 sqft		<b>RESTRICTED HEAD HEIGHT</b> Limited use area under 1.8m 0.00 sqm / 0.00 sqft
--	--	--	--	--	---	--	--



Spec Verified floor plans are produced in accordance with Royal Institution of Chartered Surveyors' Property Measurement Standards. Plots and gardens are illustrative only and excluded from all area calculations. Due to rounding, numbers may not add up precisely. All measurements shown for the individual room lengths and widths are the maximum points of measurements captured in the scan.

IPW 3B RESIDENTIAL: 58.64 sqm / 631.20 sqft  
IPW 3C RESIDENTIAL: 56.31 sqm / 606.12 sqft

spec id: 60dc7b04a258980c36bd8bc3

## DIRECTIONS

### CONTACT

1-3 Old Town  
Clapham  
London  
SW4 0JT

E: [lettings@orlandoreid.co.uk](mailto:lettings@orlandoreid.co.uk)  
T: 020 7627 3197  
[www.orlandoreid.co.uk](http://www.orlandoreid.co.uk)

