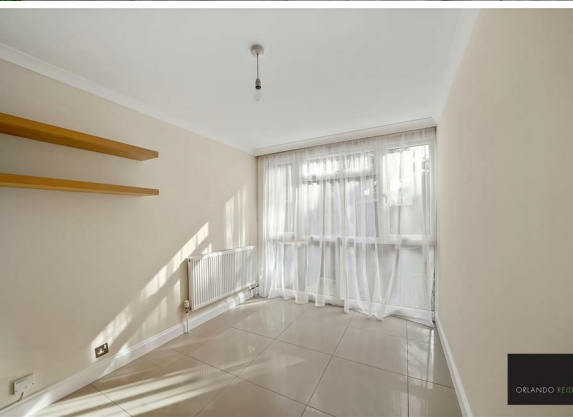




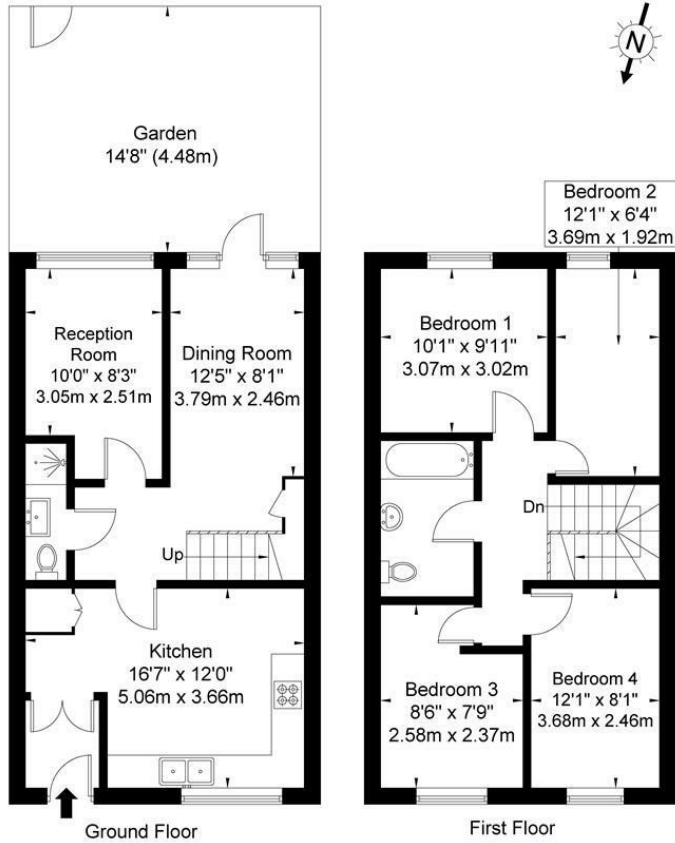
**4 Bed  
Maisonette  
located  
in Cressingham  
Gardens**  
£2,500 Per Month



 **ORLANDO REID**  
LONDON

# Uprove Manor Way SW2 2QU

Approx Gross Internal Area = 98.9 sq m / 1064 sq ft



Ref

Copyright **BLEU PLAN**

The Floor plan is not to scale and measurements and areas shown are approximate and therefore should be used for illustrative purposes only. The plan has been prepared in accordance with the RICS code of Measuring Practice and whilst we have confidence in the information produced it must not be relied on. If there is any aspect of particular importance, you should carry out or commission your own inspection of the property.  
Copyright @ BLEUPLAN

DIRECTIONS

CONTACT

1-3 Old Town  
Clapham  
London  
SW4 0JT

E: [lettings@orlandoreid.co.uk](mailto:lettings@orlandoreid.co.uk)  
T: 020 7627 3197  
[www.orlandoreid.co.uk](http://www.orlandoreid.co.uk)

