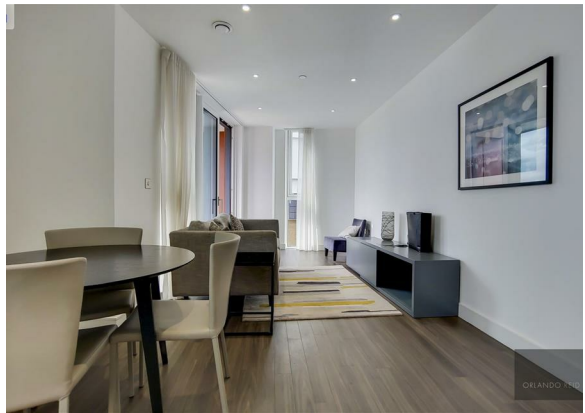




**2 Bed
Apartment
located in Nine
Elms**

£3,100 PCM

ORLANDO REID



 **ORLANDO REID**
LONDON

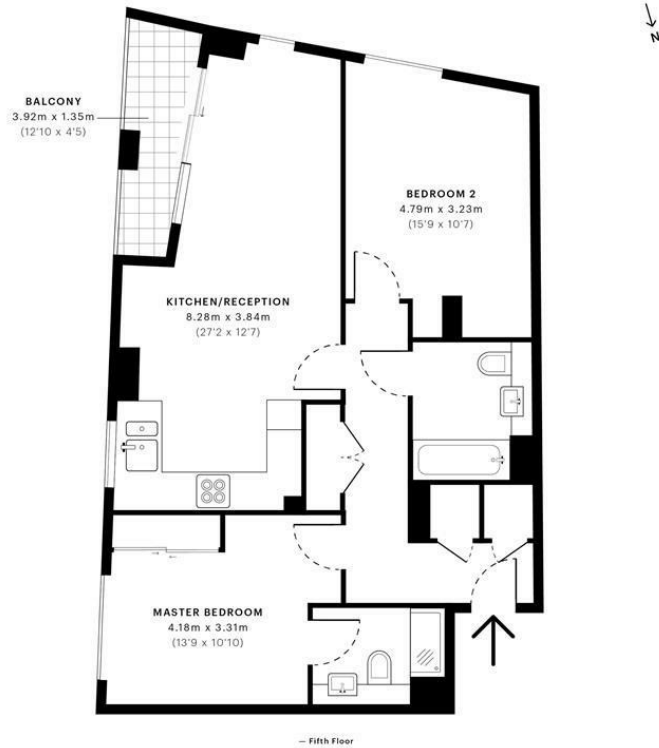


Pinto Tower, SW8

CAPTURE DATE: 06/07/2020 LASER SCAN POINTS: 27,868,877

GROSS INTERNAL AREA

74.43 sqm / 801.16 sqft



	GROSS INTERNAL AREA (GIA) The footprint of the property 74.43 sqm / 801.16 sqft		NET INTERNAL AREA (NIA) Excludes walls and structural features Includes mezzanines, restricted head height 69.16 sqm / 744.43 sqft		EXTERNAL STRUCTURAL FEATURES Balconies, terraces, verandas etc. 4.06 sqm / 43.70 sqft		RESTRICTED HEAD HEIGHT Limited use area under 1.8m 0.00 sqm / 0.00 sqft
--	--	--	--	--	--	--	--



Spec Verified floor plans are produced in accordance with Royal Institution of Chartered Surveyors' Property Measurement Standards. Plots and gardens are illustrative only and excluded from all area calculations. Due to rounding, numbers may not add up precisely. All measurements shown for the individual room lengths and widths are the maximum points of measurements captured in the scan.

IPWS 3B RESIDENTIAL: 78.11 sqm / 840.77 sqft
IPWS 3C RESIDENTIAL: 73.52 sqm / 791.39 sqft

spec id: 5efde26670f0510a0e2ebaf

Energy Efficiency Rating		
	Current	Potential
Very energy efficient - lower running costs		
(92 plus) A		
(81-91) B	85	85
(69-80) C		
(55-68) D		
(39-54) E		
(21-38) F		
(1-20) G		
Not energy efficient - higher running costs		
EU Directive 2002/91/EC		
England & Wales		

DIRECTIONS

CONTACT

1-3 Old Town
Clapham
London
SW4 0JT

E: lettings@orlandoreid.co.uk
T: 020 7627 3197
www.orlandoreid.co.uk

