



**3 Bed  
Apartment  
located in Nine  
Elms**

**£4,500 PCM**



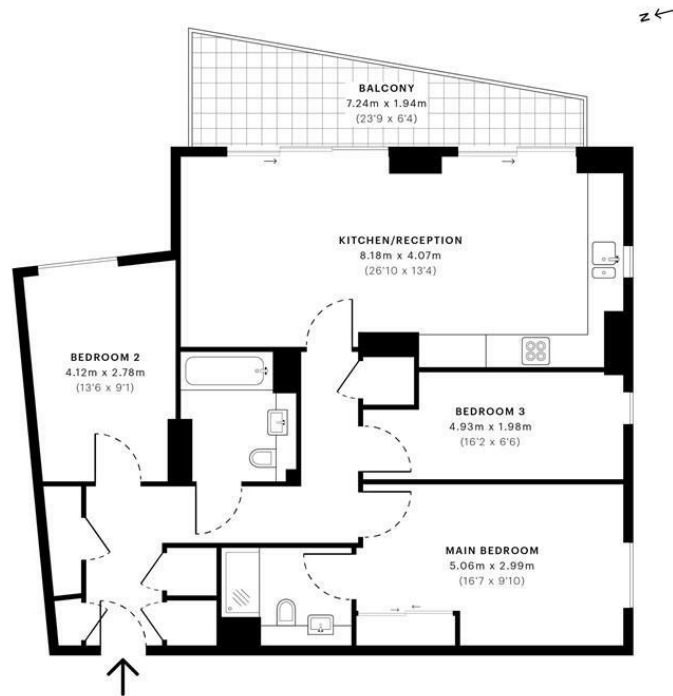


# Pinto Tower, SW8

CAPTURE DATE: 27/09/2021 LASER SCAN POINTS: 2,348,819

GROSS INTERNAL AREA

92.81 sqm / 999.00 sqft



— Second Floor

GROSS INTERNAL AREA (GIA) The footprint of the property	NET INTERNAL AREA (NIA) Excludes walls and structural features includes mezzanines, restricted head height	EXTERNAL STRUCTURAL FEATURES Balconies, terraces, verandas etc.	RESTRICTED HEAD HEIGHT Limited use area under 1.8m
92.81 sqm / 999.00 sqft	86.57 sqm / 931.83 sqft	9.34 sqm / 100.53 sqft	0.00 sqm / 0.00 sqft



Spec Verified floor plans are produced in accordance with Royal Institution of Chartered Surveyors' Property Measurement Standards. Plots and gardens are illustrative only and excluded from all area calculations. Due to rounding, numbers may not add up precisely. All measurements shown for the individual room lengths and widths are the maximum points of measurements captured in the scan.

IPWS 3B RESIDENTIAL: 105.40 sqm / 1091.46 sqft  
 IPWS 3C RESIDENTIAL: 96.09 sqm / 1040.76 sqft  
 spec id: 6138ce231c4af60db6d843d1

Energy Efficiency Rating		Current	Potential
Very energy efficient - lower running costs			
(92 plus) A			
(81-91) B			
(69-80) C			
(55-68) D			
(39-54) E			
(21-38) F			
(1-20) G			
Not energy efficient - higher running costs			
England & Wales		EU Directive 2002/91/EC	

## DIRECTIONS

### CONTACT

1-3 Old Town  
 Clapham  
 London  
 SW4 0JT

E: [lettings@orlandoreid.co.uk](mailto:lettings@orlandoreid.co.uk)  
 T: 020 7627 3197  
[www.orlandoreid.co.uk](http://www.orlandoreid.co.uk)

