



**3 Bed
Apartment
located in Central
Hill**

£1,600 PCM



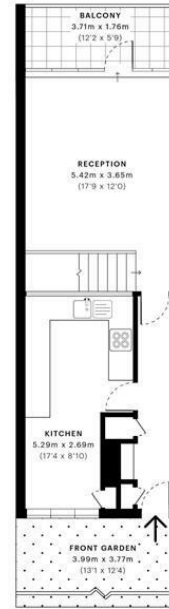


Plane Tree Walk, SE19

CAPTURE DATE:
24/12/2019

LASER SCAN POINTS:
37,089,856

GROSS INTERNAL AREA
84.3 Sqm / 907.3 Sqft



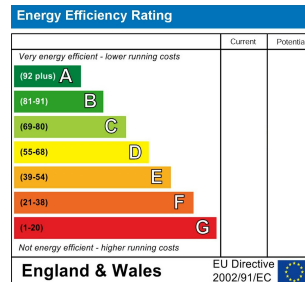
GROSS INTERNAL AREA (GIA) The footprint of the property. 84.3 Sqm / 907.3 Sqft	NET INTERNAL AREA (NIA) Excludes walls and external features. Includes washrooms, restricted head. 79.5 Sqm / 855.4 Sqft	EXTERNAL STRUCTURAL FEATURES Balconies, terraces, verandas etc. 6.5 Sqm / 69.7 Sqft	RESTRICTED HEAD HEIGHT Limited use area under 1.9m. 0.0 Sqm / 0.0 Sqft
--	--	---	--



Spec floor plans are produced in accordance with the Royal Institution of Chartered Surveyors' Property Measurement Standards. Plans and gardens are illustrative only and are excluded from all area calculations. Due to rounding, numbers may not add up precisely. All measurements shown for the individual room heights and widths are the maximum points of measurements captured in the scan.

IPMS 3B RESIDENTIAL
89.0 Sqm / 956.2 Sqft
IPMS 3C RESIDENTIAL
86.7 Sqm / 932.9 Sqft

SPEC ID:
Sdfcaw0d0aa0190c0072762



DIRECTIONS

CONTACT

1-3 Old Town
Clapham
London
SW4 0JT

E: lettings@orlandoreid.co.uk
T: 020 7627 3197
www.orlandoreid.co.uk

