



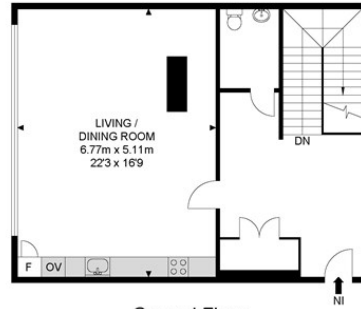
2 Bed
Apartment
located in

£4,000 PCM

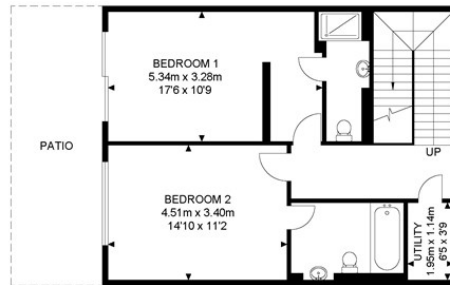


 ORLANDO REID
LONDON

Kensington House



Ground Floor



Lower Ground Floor



APPROX. GROSS INTERNAL FLOOR AREA 1266.91 SQ FT / 117.70 SQM
 APPROX. GROSS EXTERNAL FLOOR AREA 175.45 SQ FT / 16.30 SQM

Whilst every attempt has been made to ensure the accuracy of the floor plan contained here, measurements of doors, windows, rooms and any other items are approximated and no responsibility is taken for any error, omission or mis-statement. This plan is for illustrative purposes only and should be used as such by any prospective purchaser. The service, system and appliances shown have not been tested and no guarantee as to their operability or efficiency can be given.

© SpacePhoto

Photography and Floor Plan

Energy Efficiency Rating		
	Current	Potential
Very energy efficient - lower running costs		
(92 plus) A		
(81-91) B		
(69-80) C		
(55-68) D		
(39-54) E		
(21-38) F		
(1-20) G		
Not energy efficient - higher running costs		
England & Wales	EU Directive 2002/91/EC	

DIRECTIONS

CONTACT

1-3 Old Town
 Clapham
 London
 SW4 0JT

E: lettings@orlandoreid.co.uk
 T: 020 7627 3197
www.orlandoreid.co.uk

