



**1 Bed
Apartment
located in Clapham**

£1,750 PCM

ORLANDO REID



ORLANDO REID
LONDON

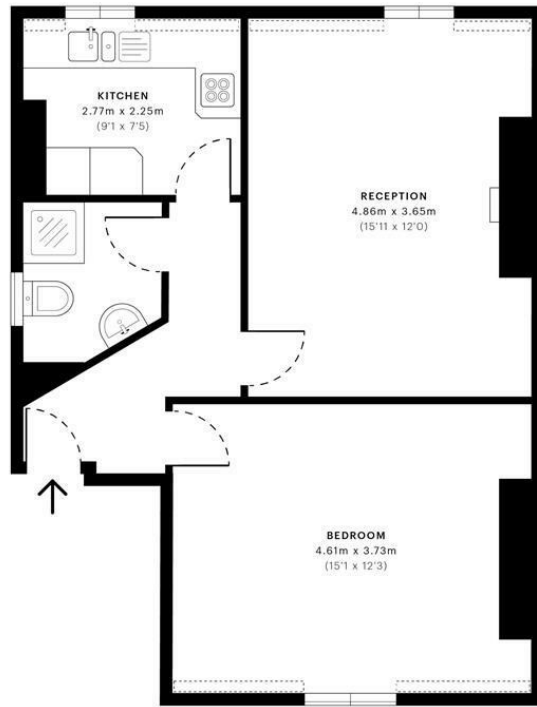


Cadmus House, SW4

CAPTURE DATE: 27/07/2020 LASER SCAN POINTS: 19,769,981

GROSS INTERNAL AREA

51.07 sqm / 549.71 sqft



— Second Floor

	GROSS INTERNAL AREA (GIA) The footprint of the property 51.07 sqm / 549.71 sqft		NET INTERNAL AREA (NIA) Excludes walls and structural features Includes windows, restricted head height 47.20 sqm / 508.06 sqft		EXTERNAL STRUCTURAL FEATURES Balconies, terraces, verandas etc. 0.00 sqm / 0.00 sqft		RESTRICTED HEAD HEIGHT Limited use area under 1.8m 0.18 sqm / 1.94 sqft
--	--	--	---	--	---	--	--



Spec Verified floor plans are produced in accordance with Royal Institution of Chartered Surveyors' Property Measurement Standards. Plots and gardens are illustrative only and excluded from all area calculations. Due to rounding, numbers may not add up precisely. All measurements shown for the individual room lengths and widths are the maximum points of measurements captured in the scan.

IPW 3B RESIDENTIAL - 49.34 sqm / 531.09 sqft
IPW 3C RESIDENTIAL - 47.34 sqm / 509.56 sqft

spec id: 5f1034656048280a5dce0f17

Energy Efficiency Rating

	Current	Potential
Very energy efficient - lower running costs		
(92 plus) A		
(81-91) B		
(69-80) C		72
(55-68) D	55	
(39-54) E		
(21-38) F		
(1-20) G		
Not energy efficient - higher running costs		
EU Directive 2002/91/EC		
England & Wales		

DIRECTIONS

CONTACT

1-3 Old Town
Clapham
London
SW4 0JT

E: lettings@orlandoreid.co.uk
T: 020 7627 3197
www.orlandoreid.co.uk

