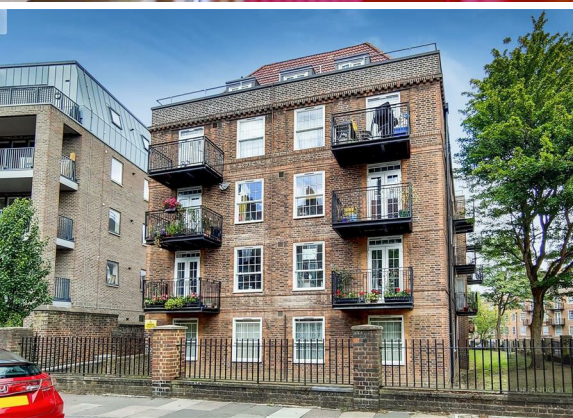




**2 Bed
Apartment
located in Brixton**

£1,750 PCM

ORLANDO REID



 **ORLANDO REID**
LONDON



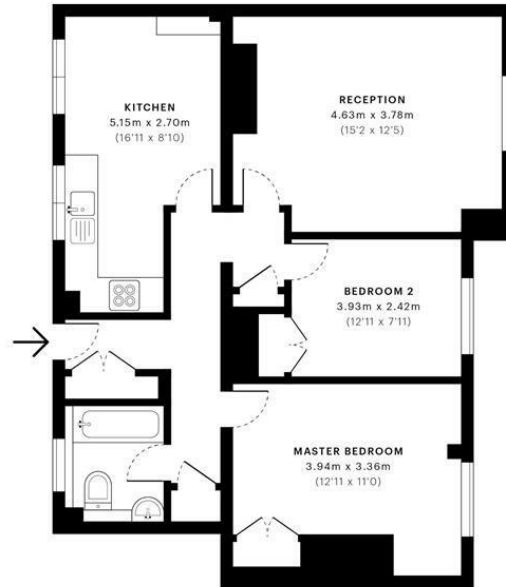
Pearce House, SW2

CAPTURE DATE: 06/07/2020 LASER SCAN POINTS: 28,642,065

GROSS INTERNAL AREA

66.90 sqm / 720.11 sqft

DIRECTIONS



— Ground Floor

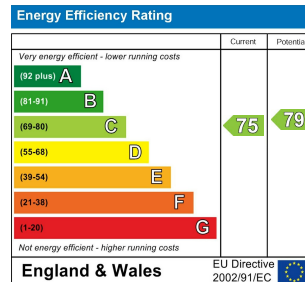
	GROSS INTERNAL AREA (GIA) The footprint of the property 66.90 sqm / 720.11 sqft		NET INTERNAL AREA (NIA) Excludes walls and structural features Includes windows, restricted head height 59.60 sqm / 641.53 sqft		EXTERNAL STRUCTURAL FEATURES Balconies, terraces, verandas etc. 0.00 sqm / 0.00 sqft		RESTRICTED HEAD HEIGHT Limited use area under 1.8m 0.00 sqm / 0.00 sqft
--	--	--	---	--	---	--	--



Spec Verified floor plans are produced in accordance with Royal Institution of Chartered Surveyors' Property Measurement Standards. Plots and gardens are illustrative only and excluded from all area calculations. Due to rounding, numbers may not add up precisely. All measurements shown for the individual room lengths and widths are the maximum points of measurements captured in the scan.

IPW138 RESIDENTIAL: 66.58 sqm / 716.66 sqft
IPW138 RESIDENTIAL: 60.58 sqm / 652.09 sqft

spec id: 5ed421d84b50000a1e1550346



CONTACT

1-3 Old Town
Clapham
London
SW4 0JT

E: lettings@orlandoreid.co.uk
T: 020 7627 3197
www.orlandoreid.co.uk

