



ORLANDO REID

ORLANDO REID

Wayford Street, London

£2,250 Per Month



ORLANDO REID



Nestled on Wayford Street in the vibrant heart of London, this delightful property offers a perfect blend of comfort and convenience. Spanning an impressive 807 square feet, this residence features two spacious double bedrooms, making it an ideal choice for couples, small families, or professionals seeking a serene retreat in the city.

The larger eat-in kitchen is a standout feature, providing ample space for dining and entertaining. It is well-equipped and designed to cater to all your culinary needs. Adjacent to the kitchen, the separate living area offers a welcoming space to relax and unwind after a long day, ensuring that you have the perfect environment for both social gatherings and quiet evenings at home.

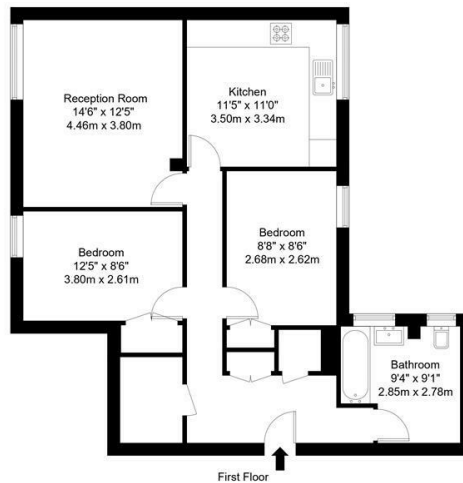
The property also boasts a generously sized bathroom, which is both functional and stylish, catering to your daily routines with ease. Additionally, the abundance of storage throughout the home is a significant advantage, allowing you to keep your living space tidy and organised.

Built in 1975, this property combines modern living with classic charm, making it a wonderful place to call home. With its prime location, you will find yourself within easy reach of local amenities, transport links, and the vibrant culture that London has to offer. This residence is not just a place to live; it is a lifestyle choice that promises comfort, convenience, and a true sense of belonging in one of the world's most exciting cities. Don't miss the opportunity to make this charming property your own.



Wayford Street, SW11 2TR

Approx Gross Internal Area = 76.78 sq m / 826 sq ft

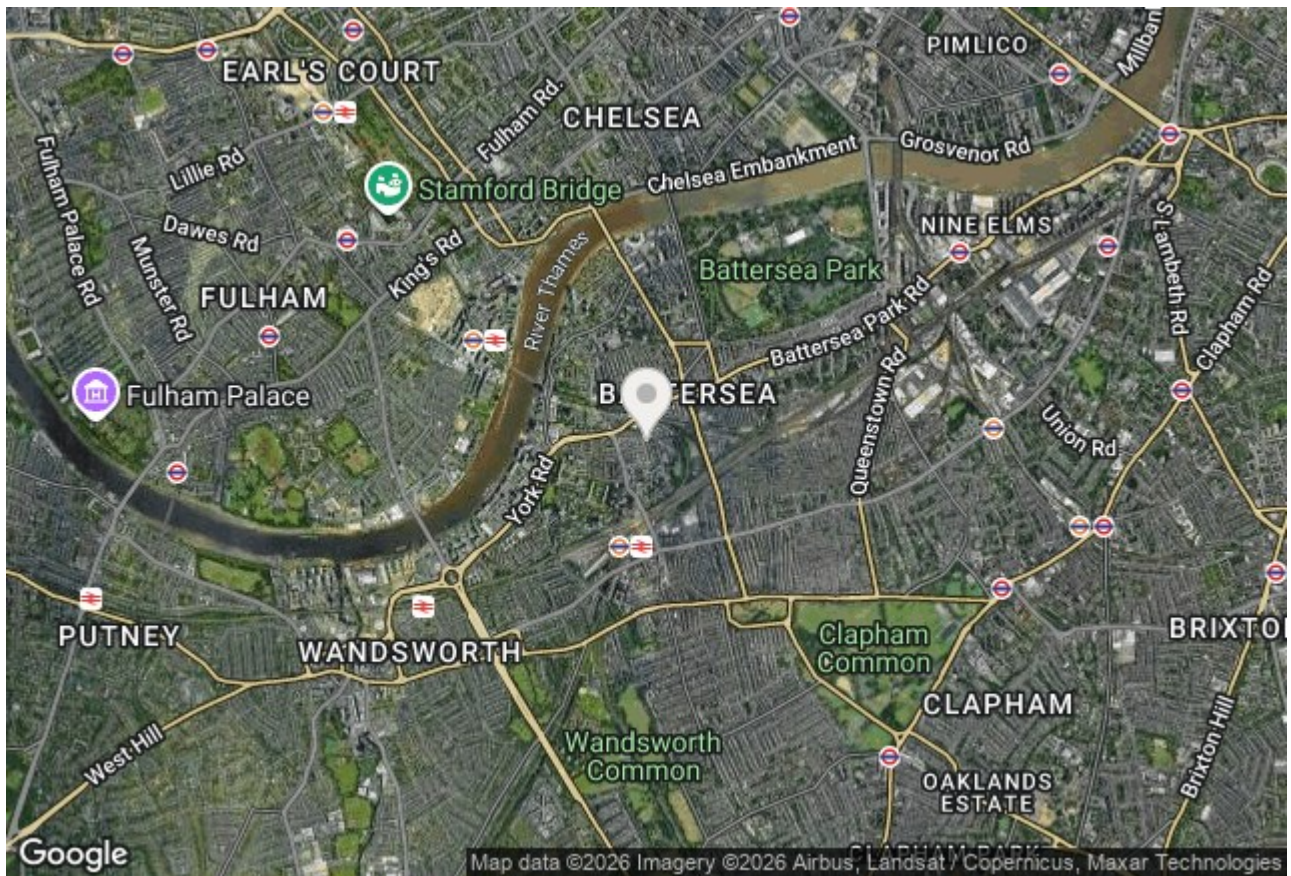


Ref :

Copyright

**BLEU
PLAN**

The Floor plan is not to scale and measurements and areas shown are approximate and therefore should be used for illustrative purposes only. The plan has been prepared in accordance with the RICS code of Measuring Practice and whilst we have confidence in the information produced it must not be relied on. Maximum lengths and widths are represented on the floor plan. If there is any aspect of particular importance, you should carry out or commission your own inspection of the property.
Copyright @ BLEUPLAN



Orlando Reid Lettings: 1-3 Old Town, Clapham, London, SW4 0JT

Tel: 020 7627 3197

Email: lettings@orlandoreid.co.uk

Agents Note: Whilst every care has been taken to prepare these sales particulars, they are for guidance purposes only. All measurements are approximate and are for general guidance purposes only and whilst every care has been taken to ensure their accuracy, they should not be relied upon and potential buyers are advised to recheck the measurements.