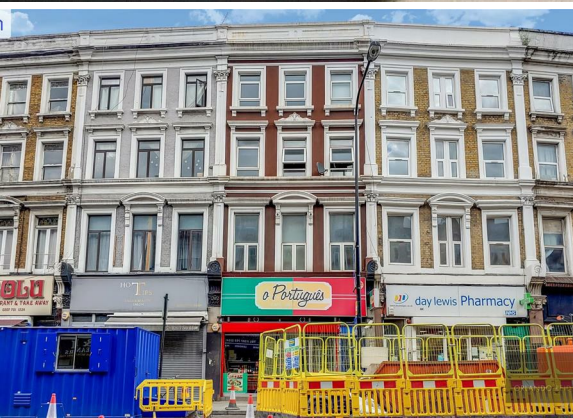




2 Bed
Apartment
located in

£1,800 PCM

ORLANDO REID



 ORLANDO REID
LONDON

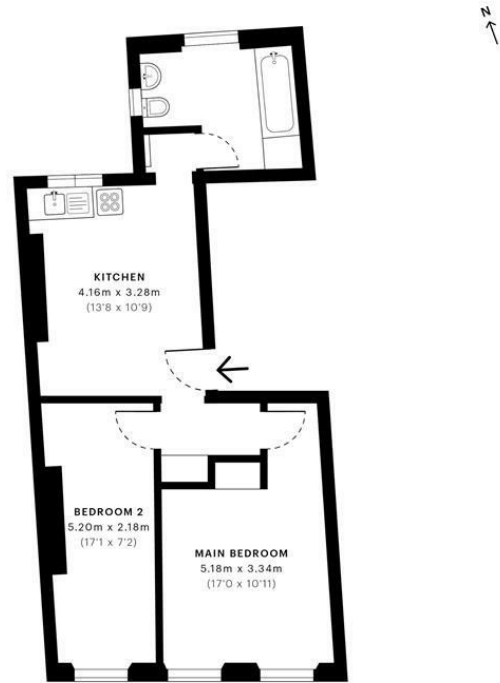


Camberwell Church Street, SE5

CAPTURE DATE: 17/06/2021 LASER SCAN POINTS: 1,099,901

GROSS INTERNAL AREA

49.45 sqm / 532.28 sqft



— Second Floor

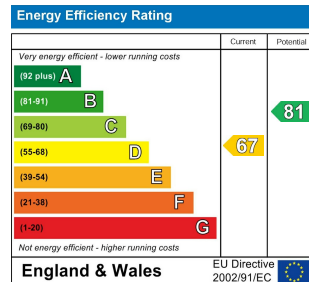
	GROSS INTERNAL AREA (GIA) The footprint of the property 49.45 sqm / 532.28 sqft		NET INTERNAL AREA (NIA) Excludes walls and structural features Includes walkways, restricted head heights 46.48 sqm / 500.31 sqft		EXTERNAL STRUCTURAL FEATURES Balconies, terraces, verandas etc. 0.00 sqm / 0.00 sqft		RESTRICTED HEAD HEIGHT Limited use area under 1.8m 0.00 sqm / 0.00 sqft
--	--	--	---	--	---	--	--



Spec Verified floor plans are produced in accordance with Royal Institution of Chartered Surveyors' Property Measurement Standards. Plots and gardens are illustrative only and excluded from all area calculations. Due to rounding, numbers may not add up precisely. All measurements shown for the individual room lengths and widths are the maximum points of measurements captured in the scan.

IPWS 3B RESIDENTIAL: 48.78 sqm / 525.06 sqft
IPWS 3C RESIDENTIAL: 46.77 sqm / 503.43 sqft

spec id: 60c39b570892aa0df55c44f6



DIRECTIONS

CONTACT

1-3 Old Town
Clapham
London
SW4 0JT

E: lettings@orlandoreid.co.uk
T: 020 7627 3197
www.orlandoreid.co.uk

