



**1 Bed
Apartment
located in**

£1,750 Per Month

ORLANDO REID

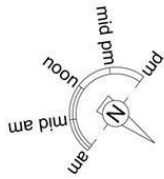


ORLANDO REID
LONDON

Rodenhurst Road, SW4

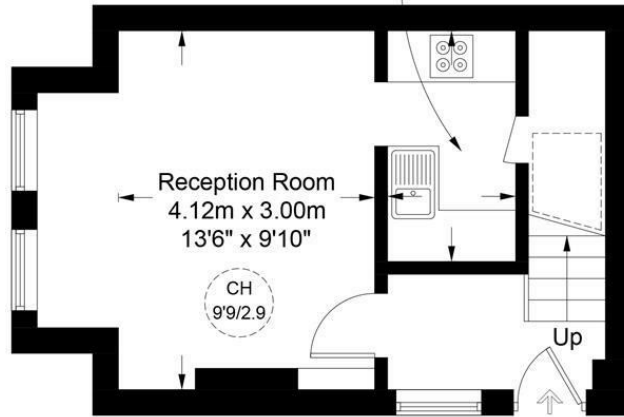
Approximate Gross Internal Area = 548 sq ft / 50.9 sq m

Restricted Height = 11 sq ft / 1.0 sq m

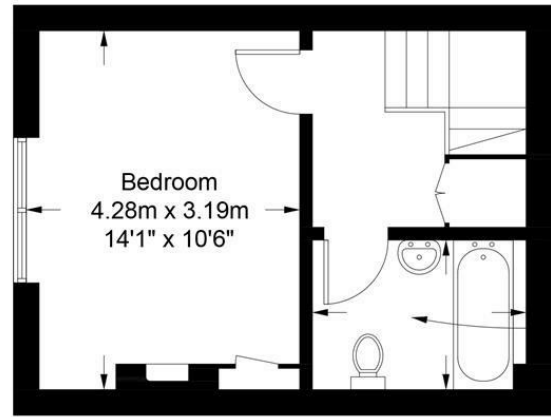


Kitchen
2.64m x 1.51m
8'8" x 4'11"

= Reduced head height below 1.5m



Ground Floor



First Floor

DIRECTIONS

CONTACT

1-3 Old Town
Clapham
London
SW4 0JT

E: lettings@orlandoreid.co.uk
T: 020 7627 3197
www.orlandoreid.co.uk



This plan is for layout guidance only and is not drawn to scale unless stated. All dimensions, including windows, doors, and the Total Gross Internal Area (GIA), are approximate. For precise measurements, please consult a qualified architect or surveyor before making any decisions based on this plan.

