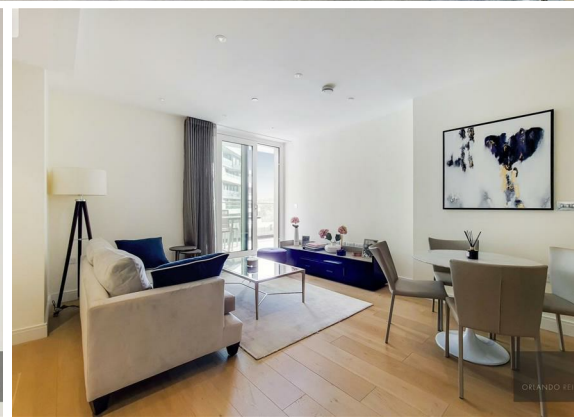
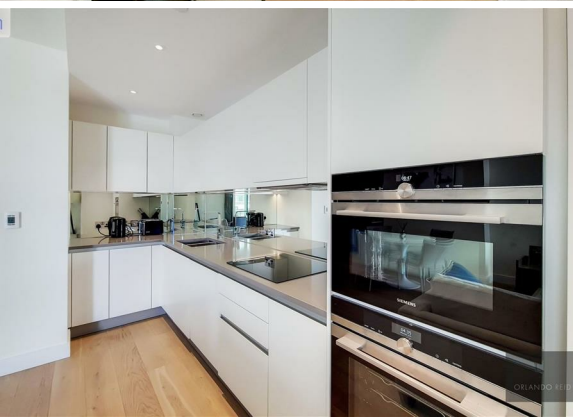




**1 Bed
Apartment
located in**

£2,750 PCM



ORLANDO REID
LONDON



Cascade Court, SW11

CAPTURE DATE: 20/04/2022 LASER SCAN POINTS: 69,914,700

GROSS INTERNAL AREA

52.43 sqm / 564.35 sqft



— Sixth Floor

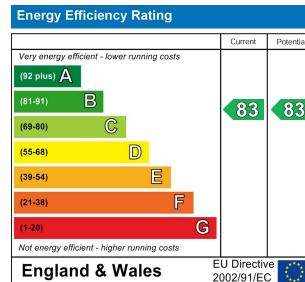
GROSS INTERNAL AREA (GIA) The footprint of the property 52.43 sqm / 564.35 sqft	NET INTERNAL AREA (NIA) Excludes walls and structural features Includes windows, restricted head height 49.83 sqm / 536.37 sqft	EXTERNAL STRUCTURAL FEATURES Balconies, terraces, verandas etc. 11.95 sqm / 128.63 sqft	RESTRICTED HEAD HEIGHT Limited use area under 1.8m 0.00 sqm / 0.00 sqft
--	---	--	--



Spec Verified floor plans are produced in accordance with Royal Institution of Chartered Surveyors' Property Measurement Standards. Plots and gardens are illustrative only and excluded from all area calculations. Due to rounding, numbers may not add up precisely. All measurements shown for the individual room lengths and widths are the maximum points of measurements captured in the scan.

IPWS 3B RESIDENTIAL: 64.60 sqm / 695.35 sqft
IPWS 3C RESIDENTIAL: 62.56 sqm / 673.39 sqft

spec id: 625efad87999c0df3d7233



DIRECTIONS

CONTACT

1-3 Old Town
Clapham
London
SW4 0JT

E: lettings@orlandoreid.co.uk
T: 020 7627 3197
www.orlandoreid.co.uk

