



**1 Bed
Apartment
located in Clapham**

£1,800 PCM

ORLANDO REID



 **ORLANDO REID**
LONDON

ORLANDO REID

ORLANDO REID

ORLANDO REID



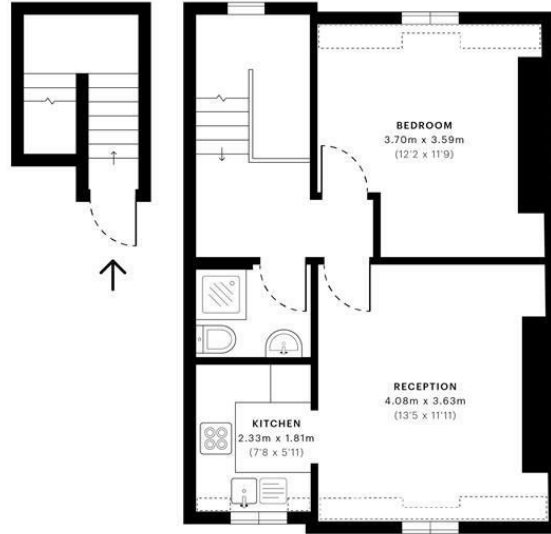
Cadmus House, SW4

CAPTURE DATE: 05/03/2022 LASER SCAN POINTS: 1,222,017

GROSS INTERNAL AREA

48.04 sqm / 517.10 sqft

DIRECTIONS



— Second Floor

— Third Floor

GROSS INTERNAL AREA (GIA)
The footprint of the property
48.04 sqm / 517.10 sqft

NET INTERNAL AREA (NIA)
Excludes walls and structural features
Includes walkways, restricted head height
40.23 sqm / 433.03 sqft

EXTERNAL STRUCTURAL FEATURES
Balconies, terraces, verandas etc.
0.00 sqm / 0.00 sqft

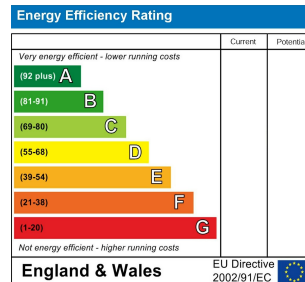
RESTRICTED HEAD HEIGHT
Limited use area under 1.8m
2.52 sqm / 27.13 sqft



Spec Verified floor plans are produced in accordance with Royal Institution of Chartered Surveyors' Property Measurement Standards. Plots and gardens are illustrative only and excluded from all area calculations. Due to rounding, numbers may not add up precisely. All measurements shown for the individual room lengths and widths are the maximum points of measurements captured in the scan.

IPW138 RESIDENTIAL: 42.08 sqm / 452.95 sqft
IPW138 RESIDENTIAL: 40.23 sqm / 433.03 sqft

spec id: 6220f0c6770e050dd14351bc



CONTACT

1-3 Old Town
Clapham
London
SW4 0JT

E: lettings@orlandoreid.co.uk
T: 020 7627 3197
www.orlandoreid.co.uk

