



**2 Bed  
Apartment  
located in Vauxhall**

£2,250 PCM

ORLANDO REID



**ORLANDO REID**  
LONDON

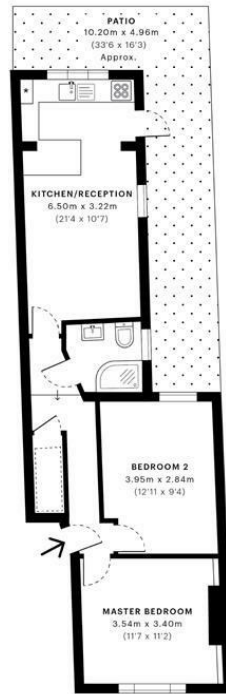


### Thorparch Road, SW8

CAPTURE DATE  
23/06/2020

LASER SCAN POINTS  
14,845,200

GROSS INTERNAL AREA  
52.5 Sqm / 565.6 Sqft



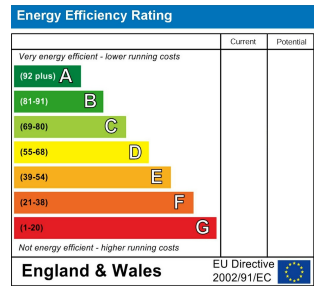
<b>GROSS INTERNAL AREA (GIA)</b> The footprint of the property. <b>52.5 Sqm / 565.6 Sqft</b>	<b>NET INTERNAL AREA (NIA)</b> Excludes walls and external features. Includes washrooms, restricted head. <b>49.4 Sqm / 531.6 Sqft</b>	<b>EXTERNAL STRUCTURAL FEATURES</b> Balconies, terraces, verandas etc. <b>0.0 Sqm / 0.0 Sqft</b>	<b>RESTRICTED HEAD HEIGHT</b> Limited use area under 1.9m <b>1.3 Sqm / 13.7 Sqft</b>
--	---	--	--

Spec floor plans are produced in accordance with the Royal Institution of Chartered Surveyors' Property Measurement Standards. Plans and gardens are illustrative only and are excluded from all area calculations. Due to rounding, numbers may not add up precisely. All measurements shown for the individual room lengths and widths are the maximum points of measurements captured in the scan. \*Excluded from measurements.

IPMS 3B RESIDENTIAL  
32.4 Sqm / 348.3 Sqft

IPMS 3D RESIDENTIAL  
49.7 Sqm / 535.3 Sqft

SPEC ID  
See76277ea7920a2129b616



## DIRECTIONS

### CONTACT

1-3 Old Town  
Clapham  
London  
SW4 0JT

E: [lettings@orlandoreid.co.uk](mailto:lettings@orlandoreid.co.uk)  
T: 020 7627 3197  
[www.orlandoreid.co.uk](http://www.orlandoreid.co.uk)

