



**2 Bed
Apartment
located in Oval**

£2,350 PCM



ORLANDO REID
LONDON

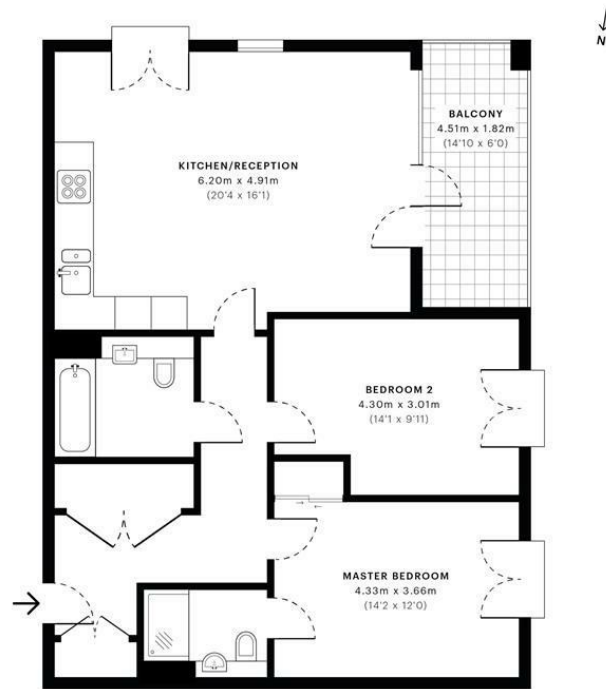


Henry Road, SW9

CAPTURE DATE:
30/01/2020

LASER SCAN POINTS:
20,988,905

GROSS INTERNAL AREA
75.6 Sqm / 814.3 Sqft



— First Floor

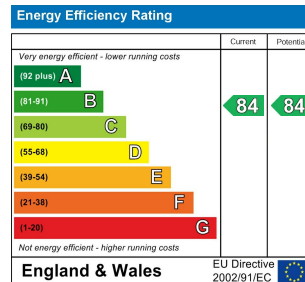
GROSS INTERNAL AREA (GIA) The footprint of the property. 75.6 Sqm / 814.3 Sqft	NET INTERNAL AREA (NIA) Excludes walls and external features. Includes washrooms, restricted head. 72.4 Sqm / 779.7 Sqft	EXTERNAL STRUCTURAL FEATURES Balconies, terraces, verandas etc. 7.9 Sqm / 85.3 Sqft	RESTRICTED HEAD HEIGHT Limited use area under 1.9m 0.0 Sqm / 0.0 Sqft
---------------------------------------------------------------------------------------------	------------------------------------------------------------------------------------------------------------------------------------------	--------------------------------------------------------------------------------------------------	------------------------------------------------------------------------------------



Spec floor plans are produced in accordance with the Royal Institution of Chartered Surveyors' Property Measurement Standards. Plans and gardens are illustrative only and are excluded from all area calculations. Due to rounding, numbers may not add up precisely. All measurements shown for the individual room heights and widths are the maximum points of measurements captured in the scan.

IPMS 3B RESIDENTIAL
83.8 Sqm / 899.5 Sqft
IPMS 3C RESIDENTIAL
80.4 Sqm / 864.9 Sqft

SPEC ID:
5e31600ab3d5ec0c5a5a5ebd0



DIRECTIONS

CONTACT

1-3 Old Town
Clapham
London
SW4 0JT

E: lettings@orlandoreid.co.uk
T: 020 7627 3197
www.orlandoreid.co.uk

