



0 Bed
Studio
located in

£2,400 PCM



 ORLANDO REID
LONDON

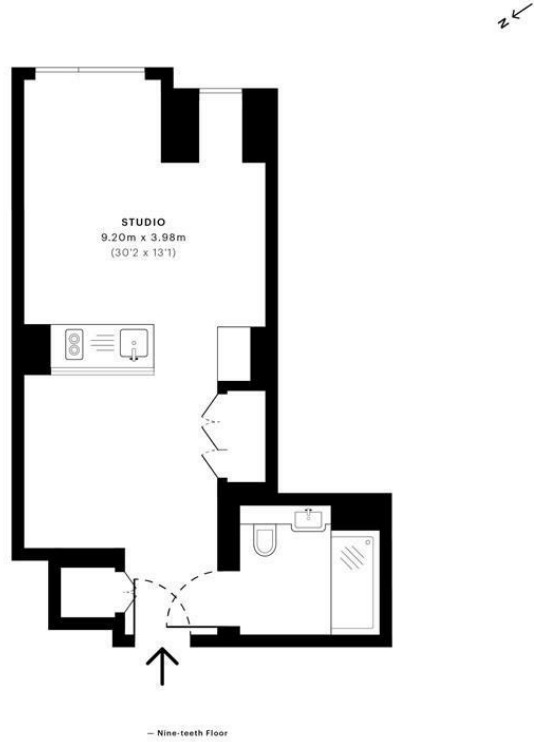


Upper Ground, SE1

CAPTURE DATE: 05/07/2022 LASER SCAN POINTS: 25,512,629

GROSS INTERNAL AREA

38.11 sqm / 410.21 sqft



GROSS INTERNAL AREA (GIA) The footprint of the property 38.11 sqm / 410.21 sqft	NET INTERNAL AREA (NIA) Excludes walls and structural features includes mezzanines, restricted head height 35.13 sqm / 378.14 sqft	EXTERNAL STRUCTURAL FEATURES Balconies, terraces, verandas etc. 0.00 sqm / 0.00 sqft	RESTRICTED HEAD HEIGHT Limited use area under 1.8m 0.00 sqm / 0.00 sqft
--	--	---	--



Spec Verified floor plans are produced in accordance with Royal Institution of Chartered Surveyors' Property Measurement Standards. Plots and gardens are illustrative only and excluded from all area calculations. Due to rounding, numbers may not add up precisely. All measurements shown for the individual room lengths and widths are the maximum points of measurements captured in the scan.

IPW3 3B RESIDENTIAL: 37.44 sqm / 403.90 sqft
IPW3 3C RESIDENTIAL: 35.13 sqm / 378.14 sqft
SPEC ID: 62c2d7fb83b8b40dd7b420e

Energy Efficiency Rating		Current	Potential
Very energy efficient - lower running costs			
(92 plus) A			
(81-91) B			
(69-80) C			
(55-68) D			
(39-54) E			
(21-38) F			
(1-20) G			
Not energy efficient - higher running costs			
England & Wales		EU Directive 2002/91/EC	

DIRECTIONS

CONTACT

1-3 Old Town
Clapham
London
SW4 0JT

E: lettings@orlandoreid.co.uk
T: 020 7627 3197
www.orlandoreid.co.uk

