

**2 Bed
Apartment
located in Goose
Green**

£1,850 PCM



ORLANDO REID



ORLANDO REID



ORLANDO REID



ORLANDO REID

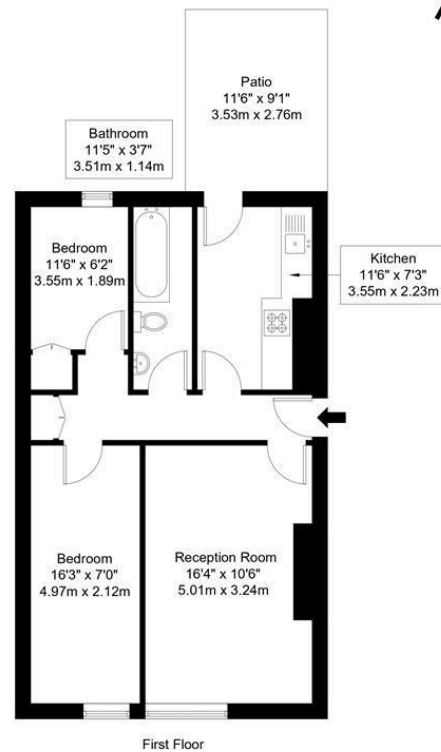
ORLANDO REID
LONDON

East Dulwich Road, SE22 9AX

Approx Gross Internal Area = 52.63 sq m / 566 sq ft

Patio = 9.74 sq m / 105 sq ft

Total = 62.37 sq m / 671 sq ft

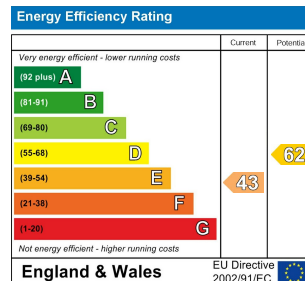


Ref :

Copyright **BLEU PLAN**

The Floor plan is not to scale and measurements and areas shown are approximate and therefore should be used for illustrative purposes only. The plan has been prepared in accordance with the RICS code of Measuring Practice and whilst we have confidence in the information produced it must not be relied on. Maximum lengths and widths are represented on the floor plan. If there is any aspect of particular importance, you should carry out or commission your own inspection of the property.

Copyright @ BLEUPLAN



DIRECTIONS

CONTACT

1-3 Old Town
Clapham
London
SW4 0JT

E: lettings@orlandoreid.co.uk
T: 020 7627 3197
www.orlandoreid.co.uk

