



4 Bed  
House - Terraced  
located in

£2,000 Per Month

ORLANDO REID

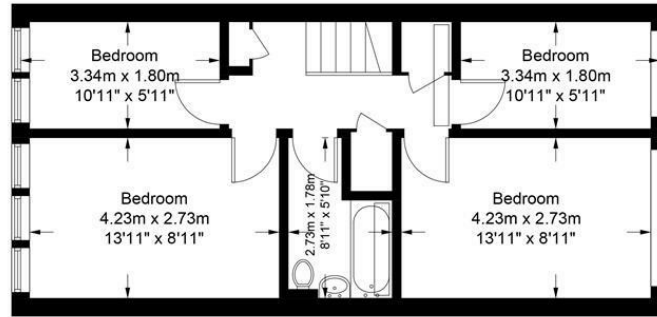
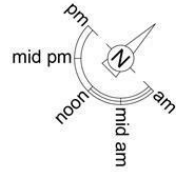


 ORLANDO REID  
LONDON

# Woodvale Walk, SE27

Approximate Gross Internal Area = 1047 sq ft / 97.3 sq m

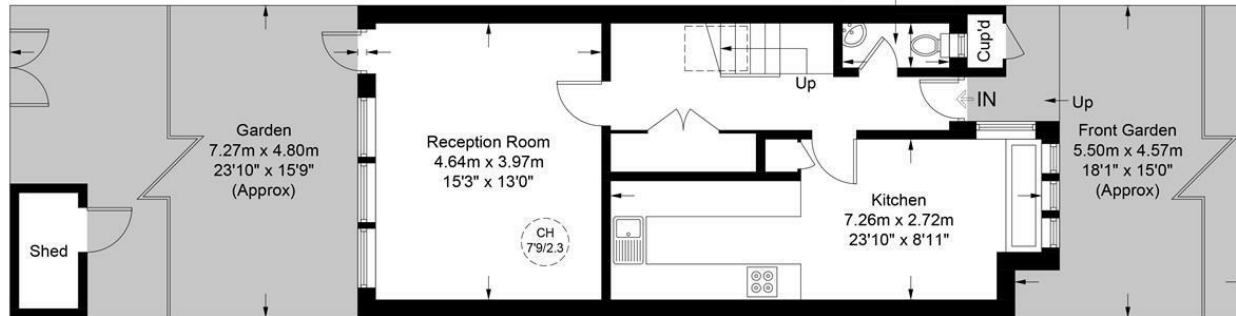
Restricted Height = 10 sq ft / 0.9 sq m



First Floor

= Reduced headroom below 1.5m / 5'0"

1.80m x 0.75m  
5'11" x 2'6"  
(Approx)



Ground Floor

## DIRECTIONS

### CONTACT

1-3 Old Town  
Clapham  
London  
SW4 0JT

E: [lettings@orlandoreid.co.uk](mailto:lettings@orlandoreid.co.uk)  
T: 020 7627 3197  
[www.orlandoreid.co.uk](http://www.orlandoreid.co.uk)



This plan is for layout guidance only and is not drawn to scale unless stated. All dimensions, including windows, doors, and the Total Gross Internal Area (GIA), are approximate. For precise measurements, please consult a qualified architect or surveyor before making any decisions based on this plan.

