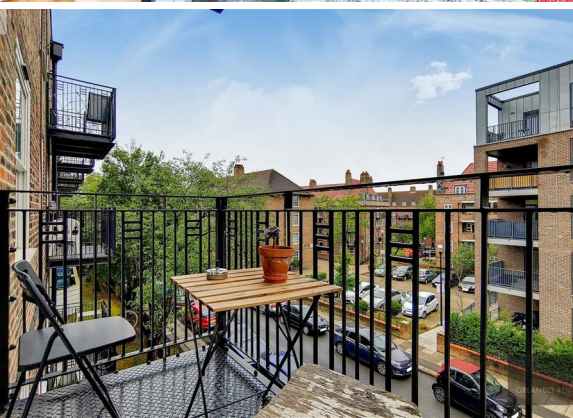




**3 Bed
Apartment
located in**

£2,550 PCM

ORLANDO REID



ORLANDO REID
LONDON

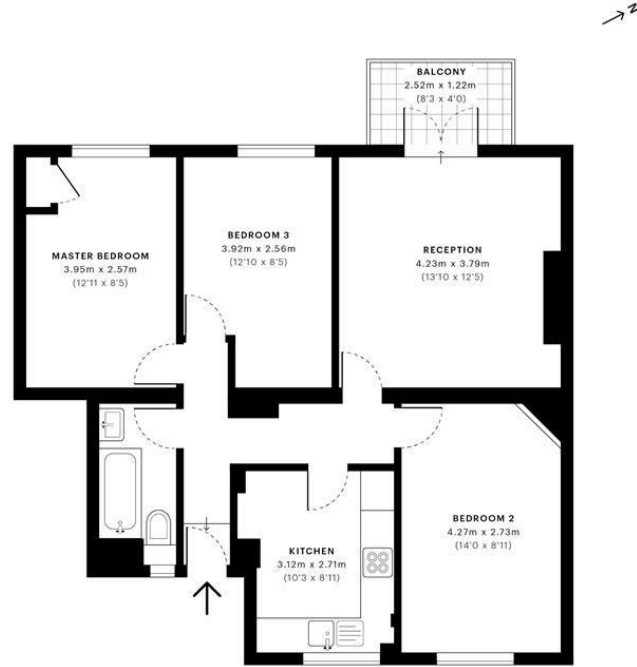


Miller House, SW2

CAPTURE DATE: 06/07/2020 LASER SCAN POINTS: 25,524,477

GROSS INTERNAL AREA

67.61 sqm / 727.75 sqft



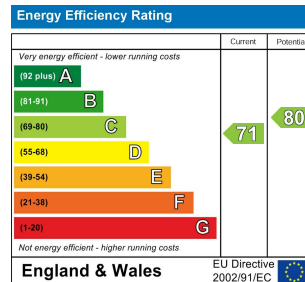
— Second Floor

GROSS INTERNAL AREA (GIA) The footprint of the property 67.61 sqm / 727.75 sqft	NET INTERNAL AREA (NIA) Excludes walls and structural features Includes mezzanines, restricted head heights 62.64 sqm / 674.25 sqft	EXTERNAL STRUCTURAL FEATURES Balconies, terraces, verandas etc. 3.06 sqm / 32.94 sqft	RESTRICTED HEAD HEIGHT Limited use area under 1.8m 0.00 sqm / 0.00 sqft
--	---	--	--



Spec Verified floor plans are produced in accordance with Royal Institution of Chartered Surveyors' Property Measurement Standards. Plots and gardens are illustrative only and excluded from all area calculations. Due to rounding, numbers may not add up precisely. All measurements shown for the individual open lengths and widths are the maximum points of measurements captured in the scan.

IPWS 3B RESIDENTIAL: 10.53 sqm / 113.18 sqft
IPWS 3C RESIDENTIAL: 66.63 sqm / 719.20 sqft
SPEC ID: 56fc67c967a8900a10732cb6



DIRECTIONS

CONTACT

1-3 Old Town
Clapham
London
SW4 0JT

E: lettings@orlandoreid.co.uk
T: 020 7627 3197
www.orlandoreid.co.uk

