



**3 Bed
Apartment
located in**

£7,000 PCM

ORLANDO REID



ORLANDO REID
LONDON

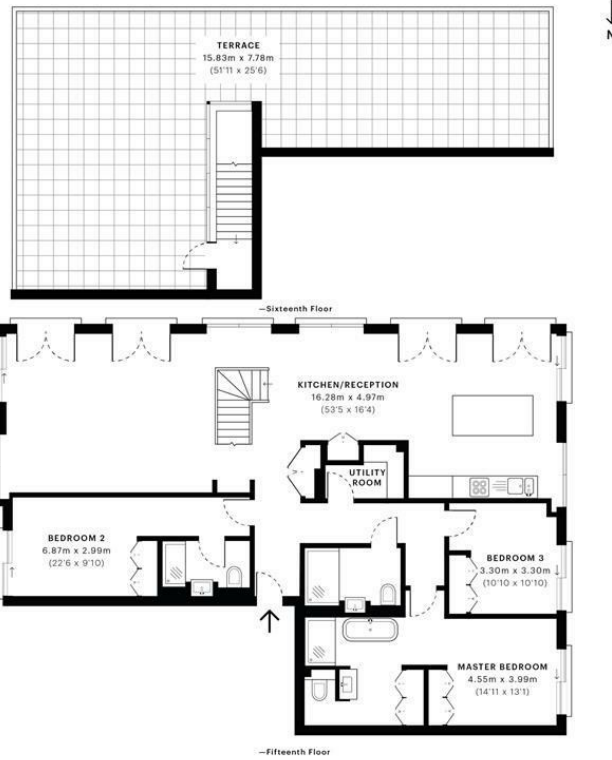


Capital Building, SW11

CAPTURE DATE: 17/07/2020 LASER SCAN POINTS: 35,076,149

GROSS INTERNAL AREA

159.47 sqm / 1716.52 sqft



	GROSS INTERNAL AREA (GIA) The footprint of the property 159.47 sqm / 1716.52 sqft		NET INTERNAL AREA (NIA) Excludes walls and structural features Includes mezzanines, restricted head height 148.42 sqm / 1597.58 sqft		EXTERNAL STRUCTURAL FEATURES Balconies, terraces, verandas etc. 84.45 sqm / 909.01 sqft		RESTRICTED HEAD HEIGHT Limited use area under 1.8m 0.00 sqm / 0.00 sqft
--	--	--	--	--	--	--	--



Spec Verified floor plans are produced in accordance with Royal Institution of Chartered Surveyors' Property Measurement Standards. Plots and gardens are illustrative only and excluded from all area calculations. Due to rounding, numbers may not add up precisely. All measurements shown for the individual room lengths and widths are the maximum points of measurements captured in the scan.

WPA 3B RESIDENTIAL: 240.76 sqm / 2591.52 sqft

WPA 3C RESIDENTIAL: 234.14 sqm / 2520.26 sqft

spec id: 5f04e97804a34a7613fa813d

DIRECTIONS

CONTACT

1-3 Old Town
Clapham
London
SW4 0JT

E: lettings@orlandoreid.co.uk
T: 020 7627 3197
www.orlandoreid.co.uk

Energy Efficiency Rating

	Current	Potential
Very energy efficient - lower running costs		
(92 plus) A		
(81-91) B		
(69-80) C		
(55-68) D		
(39-54) E		
(21-38) F		
(1-20) G		
Not energy efficient - higher running costs		
EU Directive 2002/91/EC		
England & Wales		

