

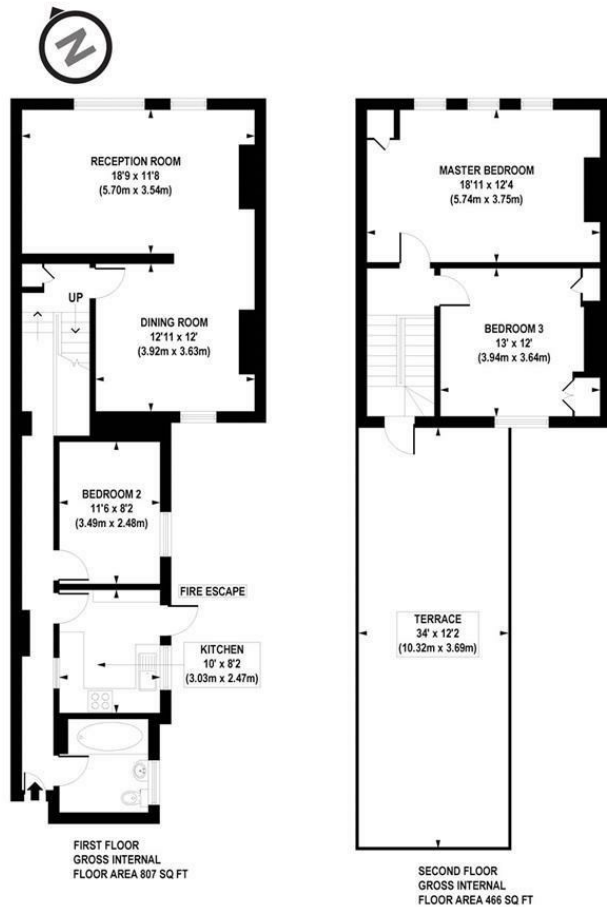


3 Bed  
Maisonette  
located in

£3,000 PCM



 ORLANDO REID  
LONDON



APPROX. GROSS INTERNAL FLOOR AREA 1273 sq. ft / 118.27 sq. m

Floorplan is for illustrative purposes only and is not to scale. Every attempt has been made to ensure the accuracy of the floorplan shown, however all measurements, fixtures, fittings and data shown are an approximate interpretation for illustrative purposes only. Liability for errors, omissions or mis-statement through negligence or otherwise is hereby excluded.

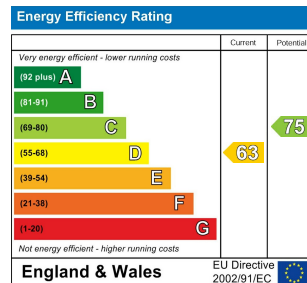
**CP CREATIVE**  
PROPERTY MARKETING

## DIRECTIONS

### CONTACT

1-3 Old Town  
Clapham  
London  
SW4 0JT

E: [lettings@orlandoreid.co.uk](mailto:lettings@orlandoreid.co.uk)  
T: 020 7627 3197  
[www.orlandoreid.co.uk](http://www.orlandoreid.co.uk)



**ORLANDO REID**  
LONDON