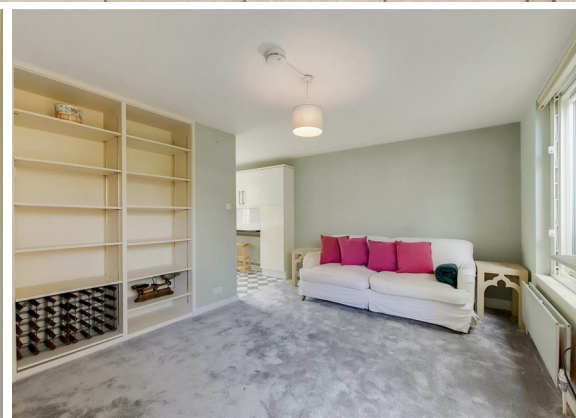
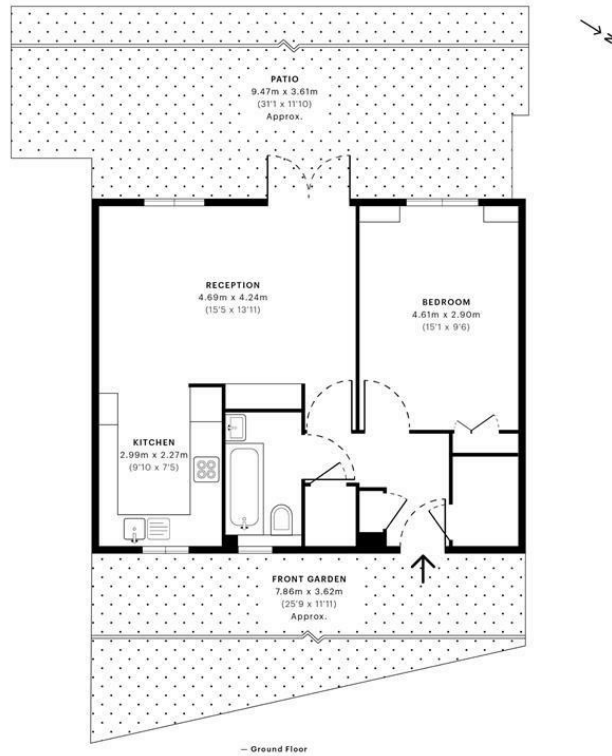




**1 Bed
Maisonette
located in Clapham**

£2,000 PCM





	GROSS INTERNAL AREA (GIA) The footprint of the property 48.20 sqm / 518.82 sqft		NET INTERNAL AREA (NIA) Excludes walls and structural features Includes mezzanines, restricted head height 46.71 sqm / 502.78 sqft		EXTERNAL STRUCTURAL FEATURES Balconies, terraces, verandas etc. 0.00 sqm / 0.00 sqft		RESTRICTED HEAD HEIGHT Limited use area under 1.8m 0.00 sqm / 0.00 sqft
--	---	--	---	--	--	--	---



Spec Verified floor plans are produced in accordance with Royal Institution of Chartered Surveyors' Property Measurement Standards. Plots and gardens are illustrative only and excluded from all area calculations. Due to rounding, numbers may not add up precisely. All measurements shown for the individual open lengths and widths are the maximum points of measurements captured in the scan.

IPW 3B RESIDENTIAL - 48.80 sqm / 525.28 sqft
IPW 3C RESIDENTIAL - 47.46 sqm / 510.86 sqft

spec id: 6290b139653db80de4a0e3f8

DIRECTIONS

CONTACT

1-3 Old Town
Clapham
London
SW4 0JT

E: lettings@orlandoreid.co.uk
T: 020 7627 3197
www.orlandoreid.co.uk

