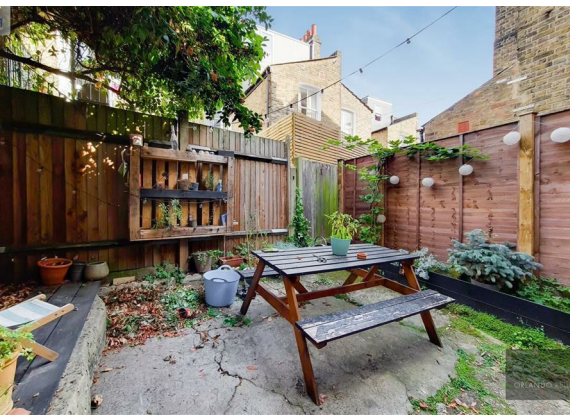




**1 Bed
Apartment
located
in Battersea**

£2,100 PCM



 **ORLANDO REID**
LONDON

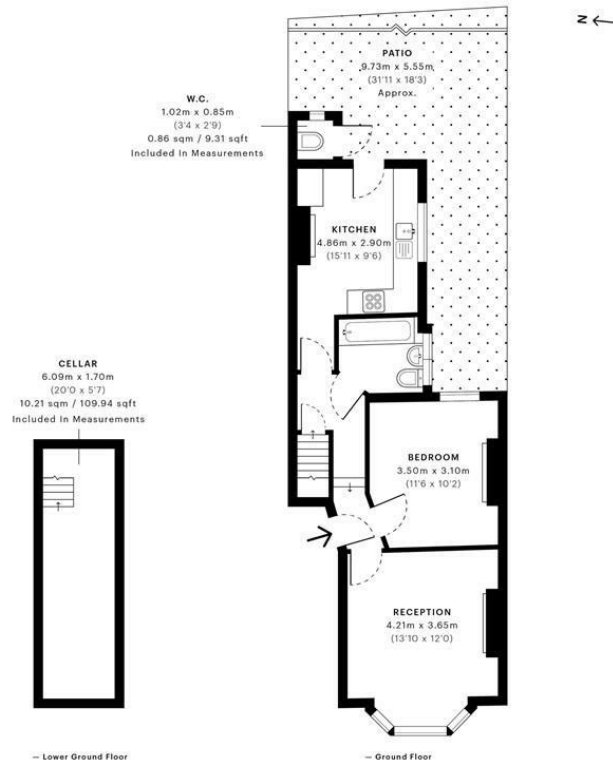


Jedburgh Street, SW11

CAPTURE DATE: 06/09/2021 LASER SCAN POINTS: 3,283,959

GROSS INTERNAL AREA

57.96 sqm / 623.88 sqft

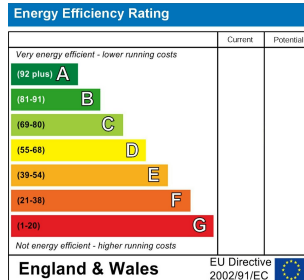


	GROSS INTERNAL AREA (GIA) The footprint of the property 57.96 sqm / 623.88 sqft		NET INTERNAL AREA (NIA) Excludes walls and structural features Includes walkways, restricted head height 52.71 sqm / 567.37 sqft		EXTERNAL STRUCTURAL FEATURES Balconies, terraces, verandas etc. 0.00 sqm / 0.00 sqft		RESTRICTED HEAD HEIGHT Limited use area under 1.8m 0.00 sqm / 0.00 sqft
--	--	--	--	--	---	--	--



Spec Verified floor plans are produced in accordance with Royal Institution of Chartered Surveyors' Property Measurement Standards. Plots and gardens are illustrative only and excluded from all area calculations. Due to rounding, numbers may not add up precisely. All measurements shown for the individual room lengths and widths are the maximum points of measurements captured in the scan.

IPW 3B RESIDENTIAL: 55.94 sqm / 602.13 sqft
IPW 3C RESIDENTIAL: 54.02 sqm / 581.47 sqft
SPEC ID: 6130cab99955e0de047dced



DIRECTIONS

CONTACT

1-3 Old Town
Clapham
London
SW4 0JT

E: lettings@orlandoreid.co.uk
T: 020 7627 3197
www.orlandoreid.co.uk

