



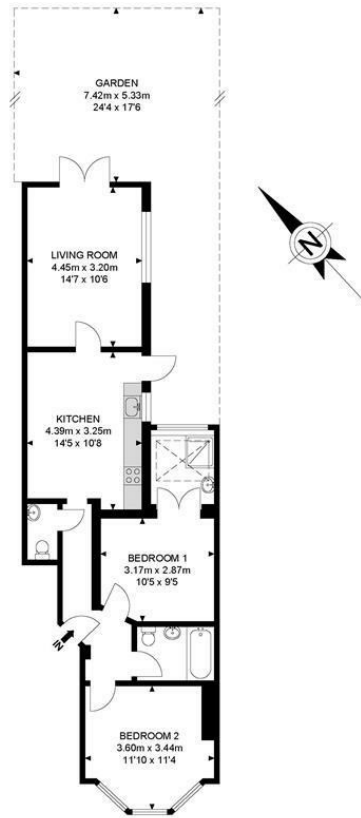
2 Bed
Apartment
located in Clapham

£2,500 PCM



 ORLANDO REID
LONDON

Mayflower Road



Ground Floor



APPROX. GROSS INTERNAL FLOOR AREA 706.11 SQ FT / 65.60 SQM

Whilst every attempt has been made to ensure the accuracy of the floor plan contained here, measurements of doors, windows, rooms and any other items are approximated and no responsibility is taken for any error, omission or mis-statement. This plan is for illustrative purposes only and should be used as such by any prospective purchaser. The service, system and appliances shown have not been tested and no guarantee as to their operability or efficiency can be given.

© SpacePhoto

Photography and Floor Plan

Energy Efficiency Rating		Current	Potential
Very energy efficient - lower running costs			
(92 plus) A			
(81-91) B			
(69-80) C			
(55-68) D			
(39-54) E			
(21-38) F			
(1-20) G			
Not energy efficient - higher running costs			
England & Wales		EU Directive 2002/91/EC	

DIRECTIONS

CONTACT

1-3 Old Town
Clapham
London
SW4 0JT

E: lettings@orlandoreid.co.uk
T: 020 7627 3197
www.orlandoreid.co.uk

