



**1 Bed
Apartment
located
in Battersea**

£1,750 PCM

ORLANDO REID



ORLANDO REID
LONDON

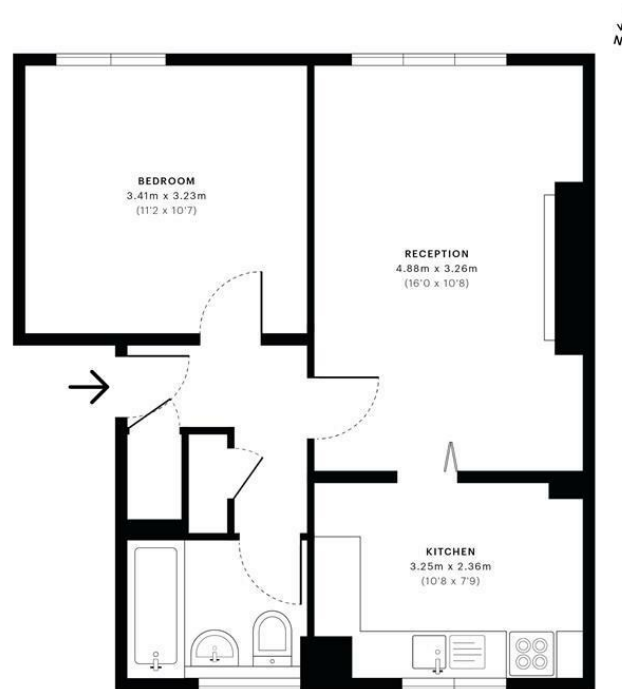


Gowrie Road, SW11

CAPTURE DATE
08/06/2020

LASER SCAN POINTS
20,789,134

GROSS INTERNAL AREA
45.2 Sqm / 487.1 Sqft



- Ground Floor

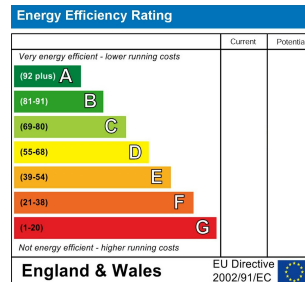
GROSS INTERNAL AREA (GIA) The footprint of the property. 45.2 Sqm / 487.1 Sqft	NET INTERNAL AREA (NIA) Excludes walls and external features. Includes washrooms, restricted head. 41.2 Sqm / 443.4 Sqft	EXTERNAL STRUCTURAL FEATURES Balconies, terraces, verandas etc. 0.0 Sqm / 0.0 Sqft	RESTRICTED HEAD HEIGHT Limited use area under 1.9m 0.0 Sqm / 0.0 Sqft
--	---	--	---



Spec floor plans are produced in accordance with the Royal Institution of Chartered Surveyors' Property Measurement Standards. Plans and gardens are illustrative only and are excluded from all area calculations. Due to rounding, numbers may not add up precisely. All measurements shown for the individual room heights and widths are the maximum points of measurements captured in the scan.

IPMS 3B RESIDENTIAL
45.3 Sqm / 487.6 Sqft
IPMS 3C RESIDENTIAL
42.3 Sqm / 455.7 Sqft

SPEC ID
5ed561632b3ce50a0dfb3998



DIRECTIONS

CONTACT

1-3 Old Town
Clapham
London
SW4 0JT

E: lettings@orlandoreid.co.uk
T: 020 7627 3197
www.orlandoreid.co.uk

