



**2 Bed
Apartment
located in Nine
Elms**

£3,000 PCM

ORLANDO REID



 **ORLANDO REID**
LONDON

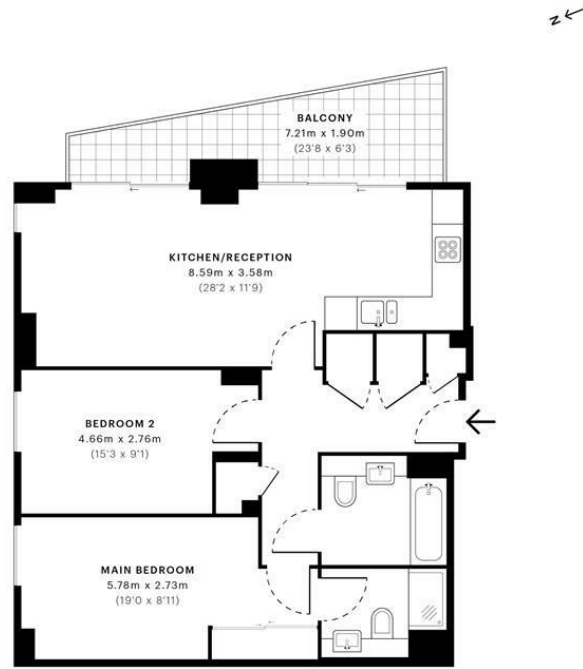


Pinto Tower, SW8

CAPTURE DATE: 31/03/2022 LASER SCAN POINTS: 31,266,248

GROSS INTERNAL AREA

76.28 sqm / 821.07 sqft



— Ninth Floor

GROSS INTERNAL AREA (GIA)
The footprint of the property
76.28 sqm / 821.07 sqft

NET INTERNAL AREA (NIA)
Excludes walls and structural features
Includes mezzanines, restricted head height
71.58 sqm / 770.48 sqft

EXTERNAL STRUCTURAL FEATURES
Balconies, terraces, verandas etc.
9.12 sqm / 98.17 sqft

RESTRICTED HEAD HEIGHT
Limited use area under 1.8m
0.00 sqm / 0.00 sqft



Spec Verified floor plans are produced in accordance with Royal Institution of Chartered Surveyors' Property Measurement Standards. Plots and gardens are illustrative only and excluded from all area calculations. Due to rounding, numbers may not add up precisely. All measurements shown for the individual room lengths and widths are the maximum points of measurements captured in the scan.

IPWS 3B RESIDENTIAL: 84.88 sqm / 913.64 sqft
IPWS 3C RESIDENTIAL: 81.00 sqm / 871.89 sqft

spec id: 624415758e85390dc5d75928

Energy Efficiency Rating

	Current	Potential
Very energy efficient - lower running costs		
(92 plus) A		
(81-91) B		
(69-80) C		
(55-68) D		
(39-54) E		
(21-38) F		
(1-20) G		
Not energy efficient - higher running costs		
EU Directive 2002/91/EC		
England & Wales		

DIRECTIONS

CONTACT

1-3 Old Town
Clapham
London
SW4 0JT

E: lettings@orlandoreid.co.uk
T: 020 7627 3197
www.orlandoreid.co.uk

