



**2 Bed
Apartment
located in**

£1,750 Per Month

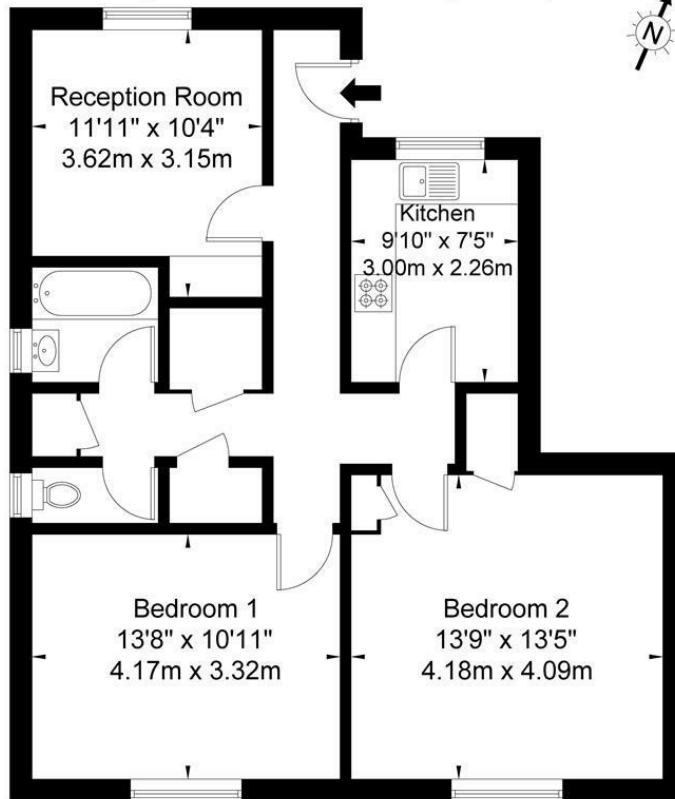
ORLANDO REID



 **ORLANDO REID**
LONDON

Holcombe House Landor Road SW9 9NS

Approx Gross Internal Area = 69.9 sq m / 752 sq ft



First Floor

Ref

Copyright

**B L E U
P L A N**

The Floor plan is not to scale and measurements and areas shown are approximate and therefore should be used for illustrative purposes only. The plan has been prepared in accordance with the RICS code of Measuring Practice and whilst we have confidence in the information produced it must not be relied on. If there is any aspect of particular importance, you should carry out or commission your own inspection of the property.

Copyright @ BLEUPLAN

DIRECTIONS

CONTACT

1-3 Old Town
Clapham
London
SW4 0JT

E: lettings@orlandoreid.co.uk
T: 020 7627 3197
www.orlandoreid.co.uk

