

**2 Bed  
Apartment  
located in Clapham**

£2,250 PCM



ORLANDO REID



ORLANDO REID



ORLANDO REID



ORLANDO REID

 **ORLANDO REID**  
LONDON

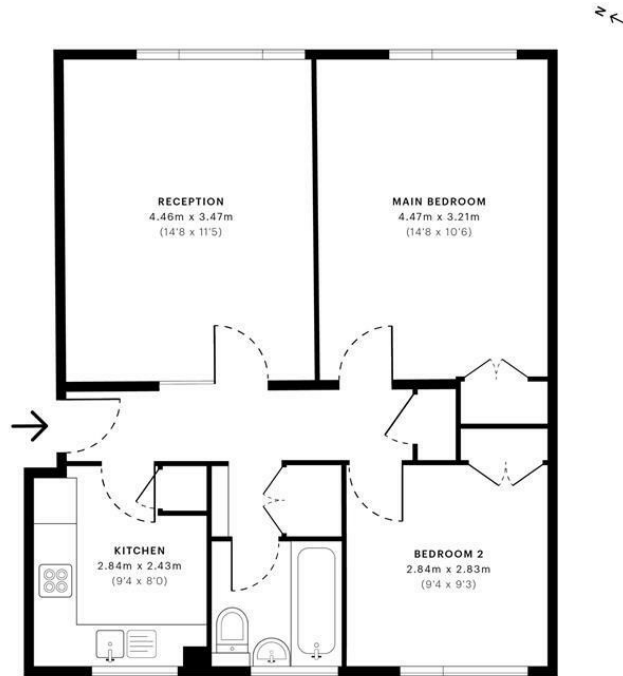


# St. Anthonys Court, SW12

CAPTURE DATE: 19/07/2022 LASER SCAN POINTS: 61,305,985

## GROSS INTERNAL AREA

58.99 sqm / 634.96 sqft



— Ground Floor

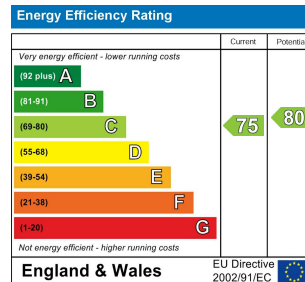
	<b>GROSS INTERNAL AREA (GIA)</b> The footprint of the property 58.99 sqm / 634.96 sqft		<b>NET INTERNAL AREA (NIA)</b> Excludes walls and structural features Includes mezzanines, restricted head height 55.28 sqm / 595.03 sqft		<b>EXTERNAL STRUCTURAL FEATURES</b> Balconies, terraces, verandas etc. 0.00 sqm / 0.00 sqft		<b>RESTRICTED HEAD HEIGHT</b> Limited use area under 1.8m 0.00 sqm / 0.00 sqft
--	--	--	--	--	---	--	--



Spec Verified floor plans are produced in accordance with Royal Institution of Chartered Surveyors' Property Measurement Standards. Plots and gardens are illustrative only and excluded from all area calculations. Due to rounding, numbers may not add up precisely. All measurements shown for the individual rooms lengths and widths are the maximum points of measurements captured in the scan.

IPWS 3B RESIDENTIAL: 61.44 sqm / 661.33 sqft  
IPWS 3C RESIDENTIAL: 57.82 sqm / 622.37 sqft

spec id: 62cfd61699ec80Dde583426f



## DIRECTIONS

### CONTACT

1-3 Old Town  
Clapham  
London  
SW4 0JT

E: [lettings@orlandoreid.co.uk](mailto:lettings@orlandoreid.co.uk)  
T: 020 7627 3197  
[www.orlandoreid.co.uk](http://www.orlandoreid.co.uk)

