



**3 Bed  
House - Terraced  
located in  
Cricklewood**

**£2,750 Per Month**



**ORLANDO REID**  
LONDON

Gratton Terrace  
Cricklewood  
London  
NW2 6QE



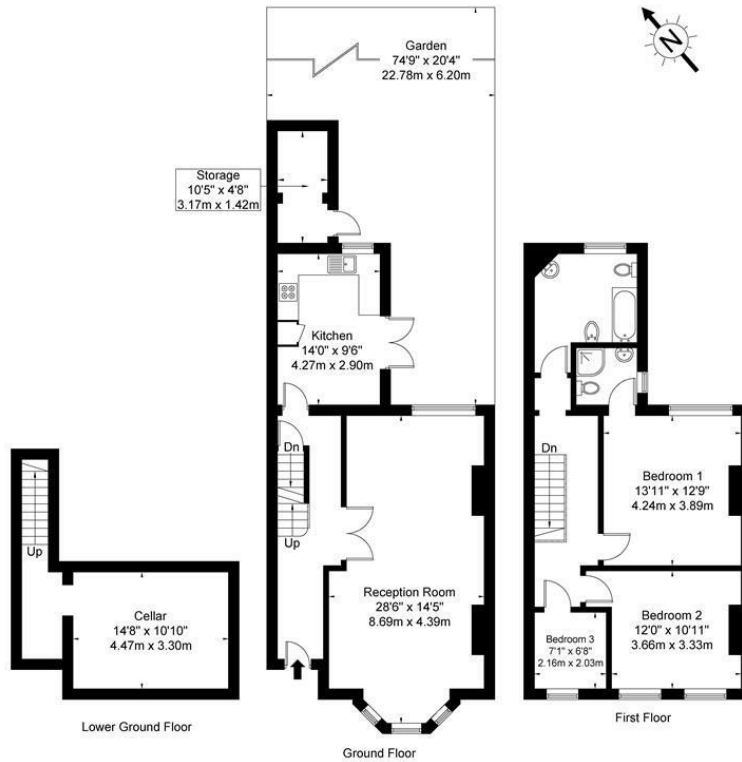


# Gratton Terrace NW2 6QE

Approx Gross Internal Area = 137.8 sq m / 1483 sq ft

Storage = 4.5 sq m / 48 sq ft

Total = 142.3 sq m / 1531 sq ft



Ref

Copyright

**BLEU  
PLAN**

The Floor plan is not to scale and measurements and areas shown are approximate and therefore should be used for illustrative purposes only. The plan has been prepared in accordance with the RICS code of Measuring Practice and whilst we have confidence in the information produced it must not be relied on. If there is any aspect of particular importance, you should carry out or commission your own inspection of the property.  
Copyright @ BLEUPLAN

Energy Efficiency Rating		Current	Potential
<i>Very energy efficient - lower running costs</i>			
(92 plus) <b>A</b>			
(81-91) <b>B</b>			
(69-80) <b>C</b>			
(55-68) <b>D</b>			
(39-54) <b>E</b>			
(21-38) <b>F</b>			
(1-20) <b>G</b>			
<i>Not energy efficient - higher running costs</i>			
<b>England &amp; Wales</b>		EU Directive 2002/91/EC	

## DIRECTIONS

## CONTACT

1-3 Old Town  
Clapham  
London  
SW4 0JT

E: [lettings@orlandoreid.co.uk](mailto:lettings@orlandoreid.co.uk)  
T: 020 7627 3197  
[www.orlandoreid.co.uk](http://www.orlandoreid.co.uk)

**ORLANDO REID**  
LONDON