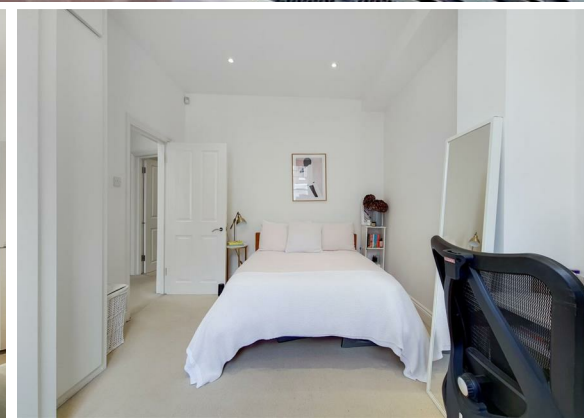




2 Bed
Maisonette
located in

£2,850 PCM



 ORLANDO REID
LONDON

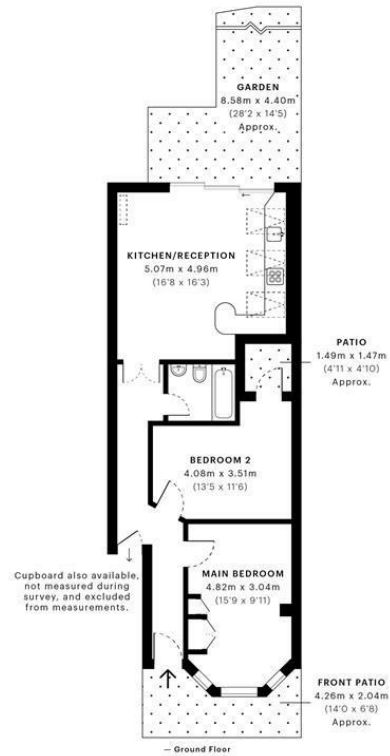


Littlebury Road, SW4

CAPTURE DATE 03/10/2022 LASER SCAN POINTS 63,429,767

GROSS INTERNAL AREA

65.26 sqm / 702.45 sqft



Open finished floor plans are produced in accordance with Good Practice of Chartered Surveyors' Property Measurement Standards. Plans and gardens are illustrative only and excluded from all area calculations. Size for marketing, numbers may not add up precisely. All measurements taken to the finished floor level, heights and widths, are the maximum points of measurements contained in the scan.

PROJ ID: 56331d121c510c505d478ccdd57
PROJ ID: 56331d121c510c505d478ccdd57

DIRECTIONS

CONTACT

1-3 Old Town
Clapham
London
SW4 0JT

E: lettings@orlandoreid.co.uk
T: 020 7627 3197
www.orlandoreid.co.uk

Energy Efficiency Rating		Current	Potential
Very energy efficient - lower running costs			
(92 plus)	A		
(81-91)	B		
(69-80)	C		
(55-68)	D		
(39-54)	E		
(21-38)	F		
(1-20)	G		
Not energy efficient - higher running costs			
England & Wales		EU Directive 2002/91/EC	

