



0 Bed
Studio
located in

£1,850 PCM

ORLANDO REID



 ORLANDO REID
LONDON

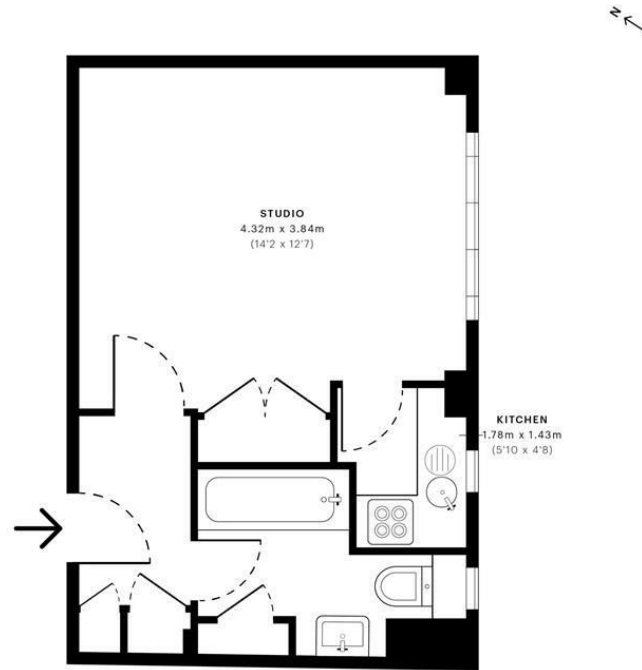


Paramount Court, WC1E

CAPTURE DATE: 15/07/2022 LASER SCAN POINTS: 28,475,903

GROSS INTERNAL AREA

28.14 sqm / 302.90 sqft



— Second Floor

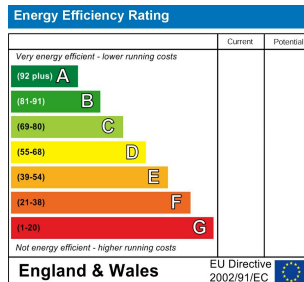
	GROSS INTERNAL AREA (GIA) The footprint of the property 28.14 sqm / 302.90 sqft		NET INTERNAL AREA (NIA) Excludes walls and structural features Includes mezzanines, restricted head height 26.42 sqm / 284.38 sqft		EXTERNAL STRUCTURAL FEATURES Balconies, terraces, verandas etc. 0.00 sqm / 0.00 sqft		RESTRICTED HEAD HEIGHT Limited use area under 1.8m 0.00 sqm / 0.00 sqft
--	--	--	--	--	---	--	--



Spec Verified floor plans are produced in accordance with Royal Institution of Chartered Surveyors' Property Measurement Standards. Plots and gardens are illustrative only and excluded from all area calculations. Due to rounding, numbers may not add up precisely. All measurements shown for the individual room lengths and widths are the maximum points of measurements captured in the scan.

IPWS 3B RESIDENTIAL: 27.99 sqm / 301.28 sqft
IPWS 3C RESIDENTIAL: 26.75 sqm / 287.93 sqft

spec id: 62cd6f2ccaf5af0dddb031b1d



DIRECTIONS

CONTACT

1-3 Old Town
Clapham
London
SW4 0JT

E: lettings@orlandoreid.co.uk
T: 020 7627 3197
www.orlandoreid.co.uk

