



**1 Bed  
Apartment  
located in King's  
Cross**

£1,650 Per Calendar  
Month

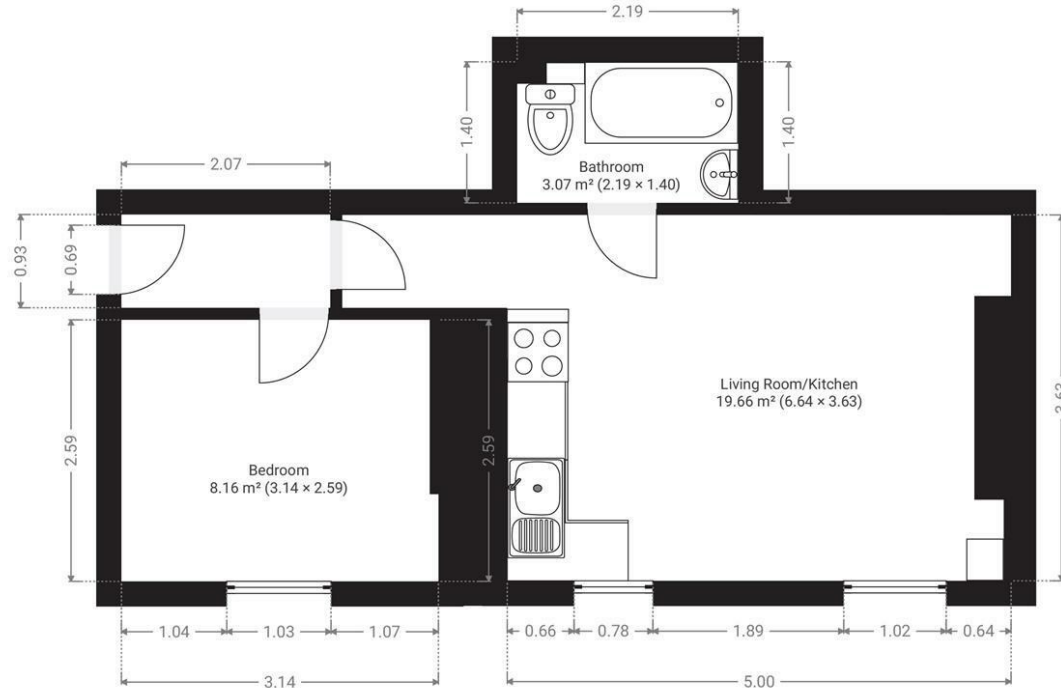


**Kings Cross Road WC1X**

**Approximate Gross Internal Area = 33.5 m<sup>2</sup> / 360.59 ft<sup>2</sup>**



**▼ 1st Floor**



Brought to you by:

**ORLANDO REID**

This plan is for layout guidance only and is not to scale unless stated. All dimensions, including windows, doors, fittings, and total area, are approximate measurements. Produced by a



**DIRECTIONS**

**CONTACT**

1-3 Old Town  
Clapham  
London  
SW4 0JT

E: [lettings@orlandoreid.co.uk](mailto:lettings@orlandoreid.co.uk)  
T: 020 7627 3197  
[www.orlandoreid.co.uk](http://www.orlandoreid.co.uk)

