



ORLANDO REID

Buckhold Road, London, Wandsworth, SW18

£450,000

ORLANDO REID



ORLANDO REID

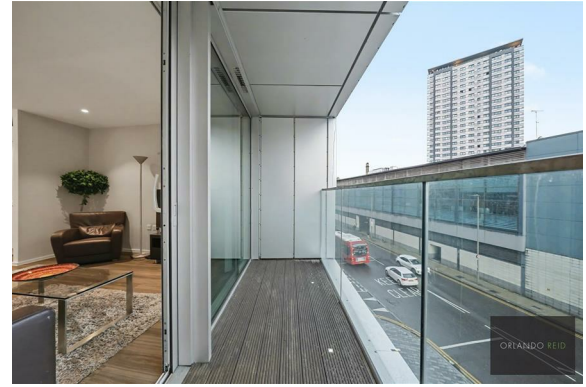
SUMMARY

A smart two-bedroom, two-bathroom apartment, located within Aurora Apartments, in the heart of Wandsworth Town Centre.

The property includes a spacious balcony space, 24-hour concierge and access to beautiful green communal gardens within the development. The flat has fitted wardrobes with sliding doors in each bedroom. The open plan kitchen is immaculately finished.

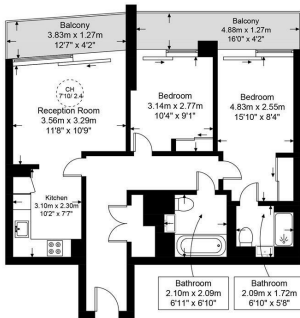
Aurora Apartments are ideally located in between East Putney Underground Station and Wandsworth Town Train Station (10 minutes' walk to both stations respectively). You can get to Oxford Circus in 30 minutes from East Putney Underground Station. You can also get to Waterloo Station and Bank Underground Station from Wandsworth Town Station in 16 minutes and 25 minutes respectively. This makes it ideal for commuting in the City of London.

The apartments are close to both King George's Park and Southside Shopping Centre. There are a variety of clubs, pubs, galleries and restaurants in the area, including on nearby fashionable Old York Road.

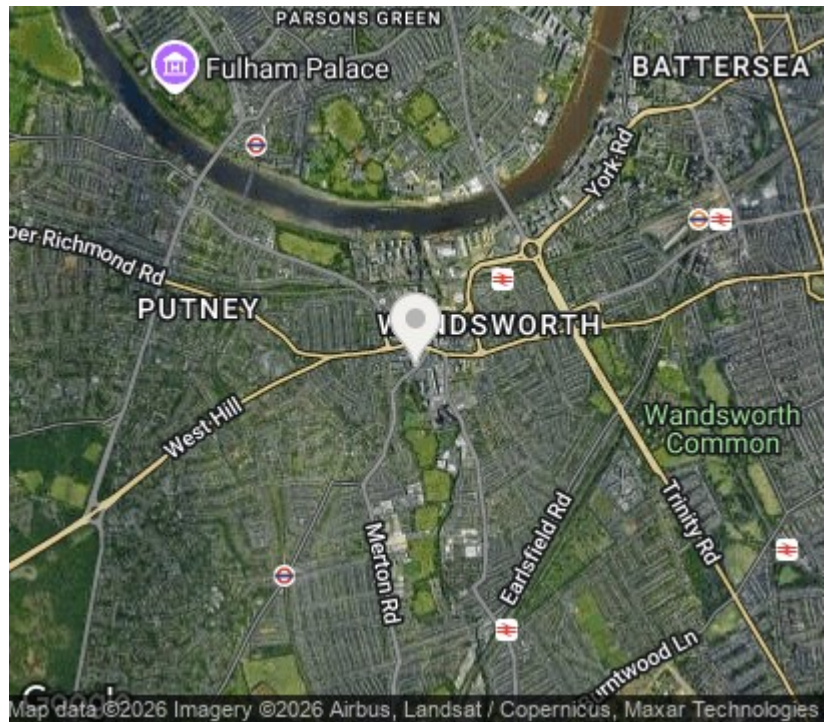


Aurora Apartments, SW18

Approximate Gross Internal Area = 698 sq ft / 64.91 sq m



This plan is for layout guidance only and is not drawn to scale unless stated. All dimensions, including windows, doors, and the Total Gross Internal Area (GIA), are approximate. For precise measurements, please consult a qualified architect or surveyor before making any decisions based on this plan.



Orlando Reid Sales 1-3 Old Town, Clapham, London, SW4 0JT

Tel: 020 7627 3197

Email: sales@orlandoreid.co.uk

Agents Note: Whilst every care has been taken to prepare these sales particulars, they are for guidance purposes only. All measurements are approximate and are for general guidance purposes only and whilst every care has been taken to ensure their accuracy, they should not be relied upon and potential buyers are advised to recheck the measurements.