



ORLANDO REID

**Stockwell Green, London, SW9**

**£525,000**

ORLANDO REID



ORLANDO REID

## SUMMARY

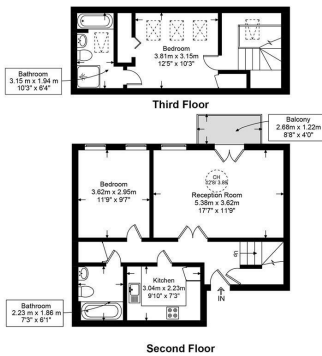
A superb split level apartment, situated within a sought-after, private development. Comprising two double bedrooms, one of which has an ensuite bathroom, separate family bathroom, reception room with access to the private balcony, and finally, a separate well-equipped kitchen. The property also benefits from secure and allocated off-street parking, a video entry system, a lift, concierge and a gym. The apartment has around 856 sq ft of internal living space and is being sold chain free and plenty of natural light.

Draymans Court is located at the corner of Combermere Road and Stockwell Green, a highly sought-after residential area. Brixton, Clapham North, and Stockwell stations are all within a 10-minute walk, offering fast links into the city via the Northern and Victoria lines. Local bus services including 2, 196, 333, 345, and N2 run nearby, providing additional connectivity across London. Local amenities are abundant: Brixton provides a vibrant array of restaurants, bars, shops, and The Ritzy Cinema, while Brockwell Park and Slade Gardens offer open green space nearby. Clapham High Street is also easily accessible, offering the London Overground, boutique shops, nightlife, and Clapham Common. The location offers something for everyone, combining convenience, culture, and lifestyle.

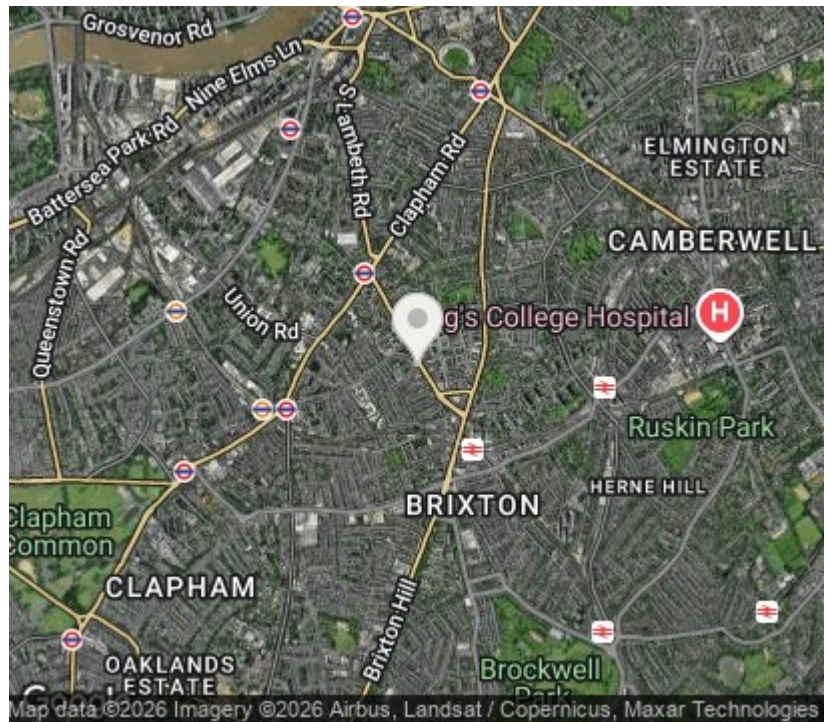


Draymans Court, SW9

Approximate Gross Internal Area = 856 sq ft / 79.58 sq m



This plan is for layout guidance only and is not drawn to scale unless stated. All dimensions, including windows, doors, and the Total Gross Internal Area (GIA), are approximate. For precise measurements, please consult a qualified architect or surveyor before making any decisions based on this plan.



Orlando Reid Sales 1-3 Old Town, Clapham, London, SW4 0JT

Tel: 020 7627 3197

Email: sales@orlandoreid.co.uk

Agents Note: Whilst every care has been taken to prepare these sales particulars, they are for guidance purposes only. All measurements are approximate are for general guidance purposes only and whilst every care has been taken to ensure their accuracy, they should not be relied upon and potential buyers are advised to recheck the measurements.