



THE VICTORIA BAILEY STREET, EARBY, BB18

6BN

Prices From

£315,950



4 Bedroom House - Semi-Detached located in Earby

Welcome to this stunning new build semi-detached house located on Bailey Street in the charming town of Earby. This delightful property boasts a spacious layout, featuring one inviting reception room that serves as the perfect space for relaxation or entertaining guests. With four well-proportioned bedrooms, there is ample room for family living or accommodating visitors.

The house includes two modern bathrooms, ensuring convenience for all residents. The contemporary design and high-quality finishes throughout the property create a warm and welcoming atmosphere, ideal for those seeking a comfortable home.

Additionally, this property offers parking, providing ease and accessibility for your daily needs. Situated in a pleasant neighbourhood, you will find yourself within reach of local amenities, schools, and parks, making it an excellent choice for families or professionals alike.

This semi-detached house on Bailey Street is a fantastic opportunity for anyone looking to settle in a vibrant community while enjoying the benefits of a brand-new home. Don't miss the chance to make this property your own.



Welcome to this stunning new build semi-detached house located on Bailey Street in the charming town of Earby. This delightful property boasts a spacious layout, featuring one inviting reception room that serves as the perfect space for relaxation or entertaining guests. With four well-proportioned bedrooms, there is ample room for family living or accommodating visitors.

The house includes two modern bathrooms, ensuring convenience for all residents. The contemporary design and high-quality finishes throughout the property create a warm and welcoming atmosphere, ideal for those seeking a comfortable home.

Additionally, this property offers parking, providing ease and accessibility for your daily needs. Situated in a pleasant neighbourhood, you will find yourself within reach of local amenities, schools, and parks, making it an excellent choice for families or professionals alike.

This semi-detached house on Bailey Street is a fantastic opportunity for anyone looking to settle in a vibrant community while enjoying the benefits of a brand-new home. Don't miss the chance to make this property your own.

Services

We have not been able to test the equipment, services or installations in the property (including heating and hot water systems) and recommend that prospective purchasers arrange for a qualified person to check the relevant installations before entering into any commitment

Agents Note & Disclaimer

These details do not form part of an offer or contract. They are intended to give a fair description of the property, but neither the vendor nor Carling Jones accept responsibility for any errors it may contain. Purchasers or prospective tenants should satisfy themselves by inspecting the property

Viewings

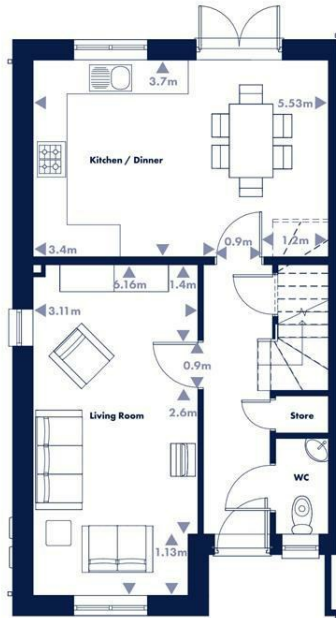
Strictly by appointment through the agents Carling Jones - contact a member of the team at the Skipton Office on 01756 799163



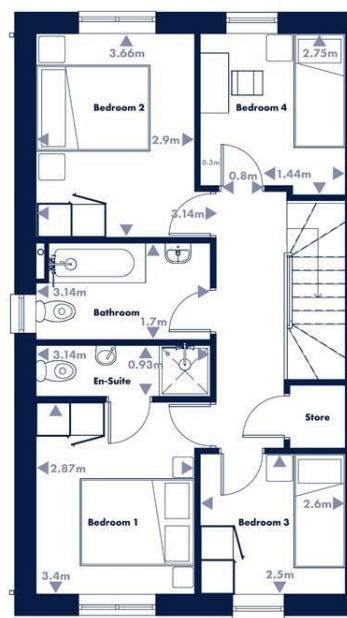
VICTORIA

Semi-detached | 4 bedrooms | 2 bathrooms

104m² (1122 ft²)



Ground Floor

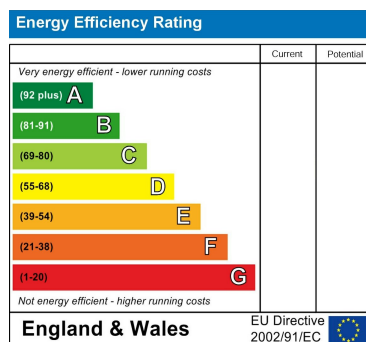


First Floor

16

Council Tax Band

Energy Performance Graph



Call us on

01756 799163

sales@carlingjones.co.uk

<https://carlingjones.co.uk/>

Agents Note: Whilst every care has been taken to prepare these particulars, they are for guidance purposes only. All measurements are approximate and are for general guidance purposes only and whilst every care has been taken to ensure their accuracy, they should not be relied upon and potential buyers are advised to recheck the measurements.