



The Marches Norton Manor Park

Norton, Presteigne, LD8 2EG

£275,000



The Marches is set in one of the most stunning settings of any Park Home that you will find in the UK, with a decking area adjacent to the sun lounge affording views out over the lake, rolling hills and open countryside. This Park Home is situated in a truly unique setting in some of the most unspoilt rural countryside. The Park is approached down a 1-mile private drive and offers stunning views of the surrounding countryside. The Park has acres of woodland to stroll around and watch all the wildlife that abounds in this area, this really will be your forever home and to fully appreciate its unique setting book your viewing now.

The property briefly comprises:

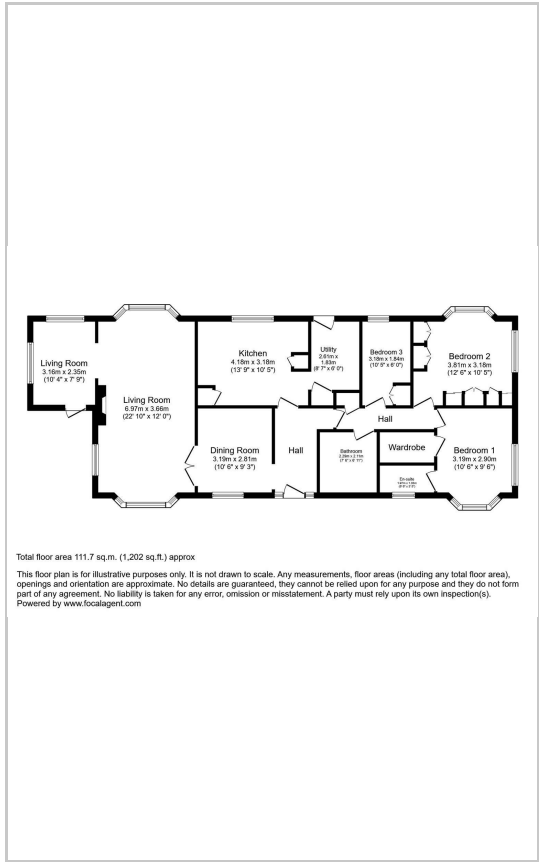
Large bright and airy lounge with bay windows at each end, door through to sun lounge, dining room, large well-equipped kitchen, utility room, family bathroom, main bedroom benefiting from built-in wardrobes and en-suit, bedroom 2 with built-in wardrobes, bed 3/study.



Area Map



Floor Plans



Energy Efficiency Graph

Energy Efficiency Rating		Current	Potential
<i>Very energy efficient - lower running costs</i>			
(92 plus) A			
(81-91) B			
(69-80) C			
(55-68) D			
(39-54) E			
(21-38) F			
(1-20) G			
<i>Not energy efficient - higher running costs</i>			
England & Wales		EU Directive 2002/91/EC	

These particulars, whilst believed to be accurate are set out as a general outline only for guidance and do not constitute any part of an offer or contract. Intending purchasers should not rely on them as statements of representation of fact, but must satisfy themselves by inspection or otherwise as to their accuracy. No person in this firms employment has the authority to make or give any representation or warranty in respect of the property.