

GUILDHALL

SALES & LETTINGS



11B Meadow Court South Meadow Lane

, Preston, PR1 8JY

Offers Over £100,000



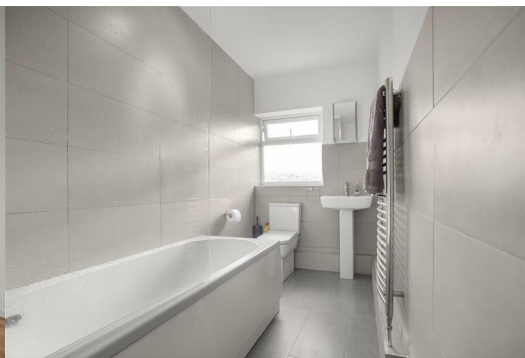
Welcome to this beautifully presented NO CHAIN two-bedroom apartment offering modern living in a highly sought-after location. The property features a bright and spacious open-plan kitchen, dining, and living area, designed with both comfort and style in mind. Floor-to-ceiling windows flood the living space with natural light, creating a warm and inviting atmosphere throughout the day.

The modern kitchen comes fully fitted with sleek cabinetry and contemporary finishes, making it perfect for both everyday living and entertaining. The apartment boasts a three-piece bathroom suite with stylish, modern fixtures. Bedroom one includes fitted wardrobes, providing ample storage while maintaining a clean, uncluttered look.

Externally, residents benefit from a private car park to the rear, offering convenient and secure parking.

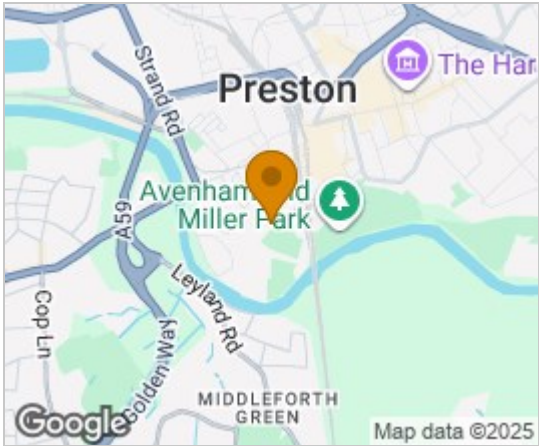
Located on South Meadow Lane, this property enjoys a fantastic position close to local amenities, transport links, and leisure spots, making it ideal for professionals, couples, or small families.

Don't miss out on this stunning apartment that perfectly combines modern design, convenience, and location.

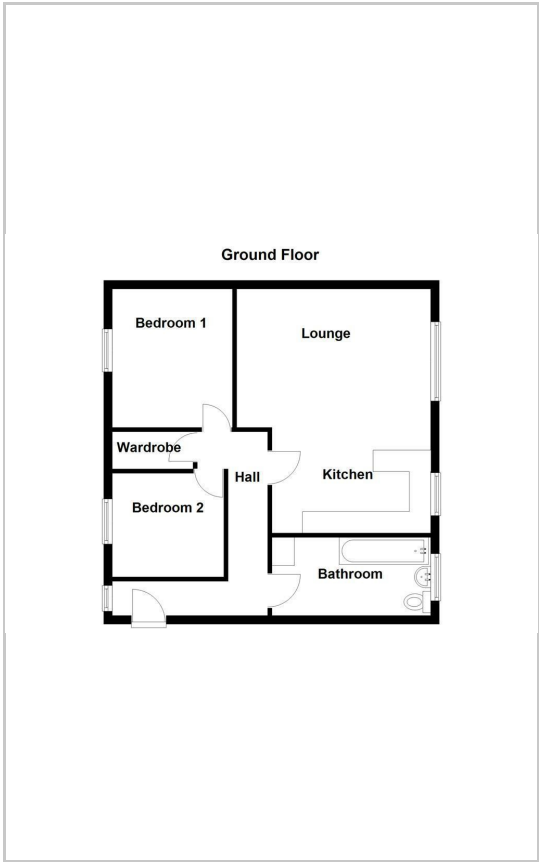


- Bedroom One 11'1" x 9'2" (3.4m x 2.8m)
- Bedroom Two 9'2" x 8'6" (2.8m x 2.6m)
- Lounge 18'8" x 15'1" (5.7m x 4.6m)
- Bathroom 12'1" x 4'11" (3.7m x 1.5)

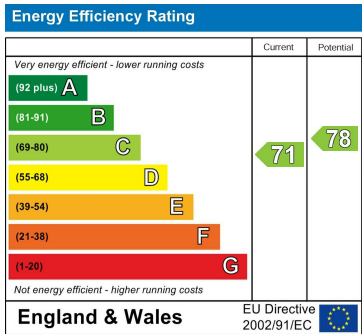
Area Map



Floor Plans



Energy Efficiency Graph



These particulars, whilst believed to be accurate are set out as a general outline only for guidance and do not constitute any part of an offer or contract. Intending purchasers should not rely on them as statements of representation of fact, but must satisfy themselves by inspection or otherwise as to their accuracy. No person in this firms employment has the authority to make or give any representation or warranty in respect of the property.