



15B Newton Road

Ashton-On-Ribble, Preston, PR2 1DY

Offers Over £125,000



Situated in the desirable area of Ashton - On - Ribble, this two bedroom first floor apartment is being proudly welcomed to the market. Conveniently located near local amenities, schools, and excellent commuter links, this property is an opportunity not to be missed. Featuring neutral décor and spacious living areas, it is an ideal choice for first time buyers or investors.

As you step inside, you are greeted by a welcoming hallway, which provides access to the spacious living room and dining room. From here, you can access the kitchen and the three-piece family bathroom. The property also boasts two generously sized double bedrooms.

The property offers ample parking space at both the front and rear, accommodating multiple vehicles. Additionally, it includes a detached garage, ideal for storage.



First Floor Apartment

Living Room/Dining Room 21'3" x 15'8" (6.5 x 4.8)

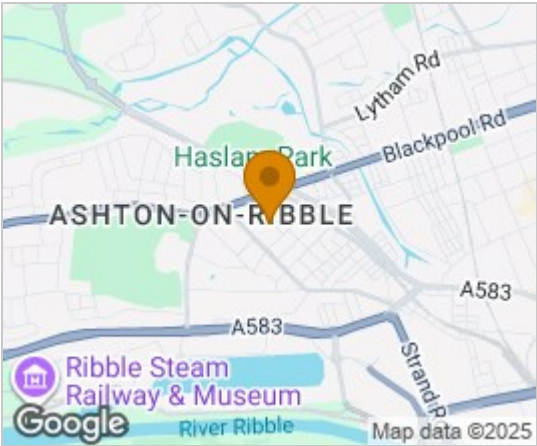
Kitchen 9'5" x 6'10" (2.89 x 2.1)

Bedroom One 15'8" x 10'2" (4.8 x 3.1)

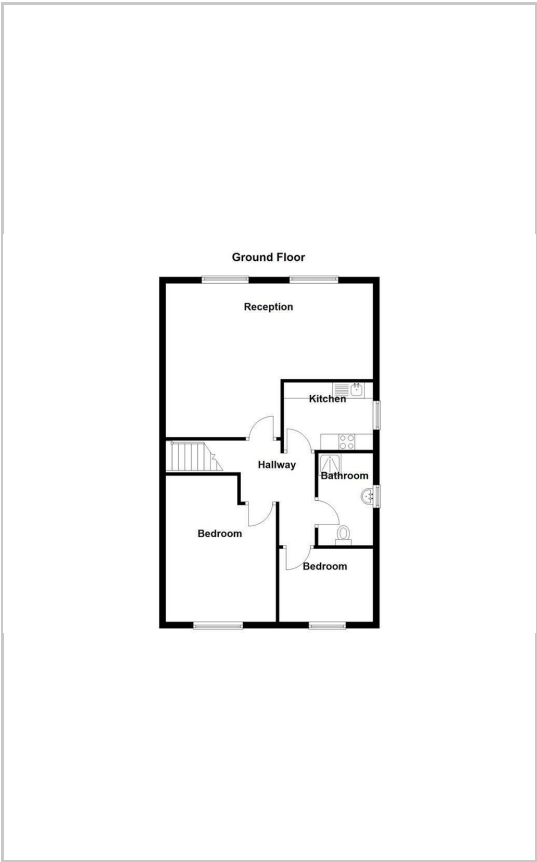
Bedroom Two 9'6" x 7'6" (2.9 x 2.3)

Bathroom 9'6" x 6'6" (2.9 x 2.0)

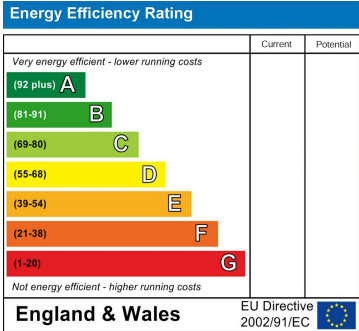
Area Map



Floor Plans



Energy Efficiency Graph



These particulars, whilst believed to be accurate are set out as a general outline only for guidance and do not constitute any part of an offer or contract. Intending purchasers should not rely on them as statements of representation of fact, but must satisfy themselves by inspection or otherwise as to their accuracy. No person in this firms employment has the authority to make or give any representation or warranty in respect of the property.