



Flat 5, 3 Burrows Close, Gloucester, GL2 5SB

£40,625

CHOSEN
ESTATE AGENTS

THE PROPERTY

We are pleased to present this beautifully maintained one bedroom first floor apartment to the market, situated in the sought-after Burrows Close.

This property offers a spacious living room, modern fitted kitchen, well-proportioned bedroom, and a contemporary bathroom, providing everything needed for comfortable and convenient living.

Additional benefits include an allocated parking space, and the use of communal gardens.

Perfectly positioned just a stone's throw from the renowned Gloucester Docks, residents can enjoy an abundance of shops, restaurants, and leisure facilities right on their doorstep.

- Beautifully Presented One Bedroom Apartment
- 25% Shared Ownership
- Communal Gardens
- Council Tax Band: A
- First Floor
- One Allocated Off Road Parking Space
- Close To The Popular Gloucester Docks
- EPC Rating: C77

Agents Note.

Property Type: Apartment

Full selling price: £162500.00

Pricing Options: Shared ownership

Tenure: Leasehold

Percentage to be sold: 25%

Share price: £40625.00

Monthly rent based on 25% share: £334.21

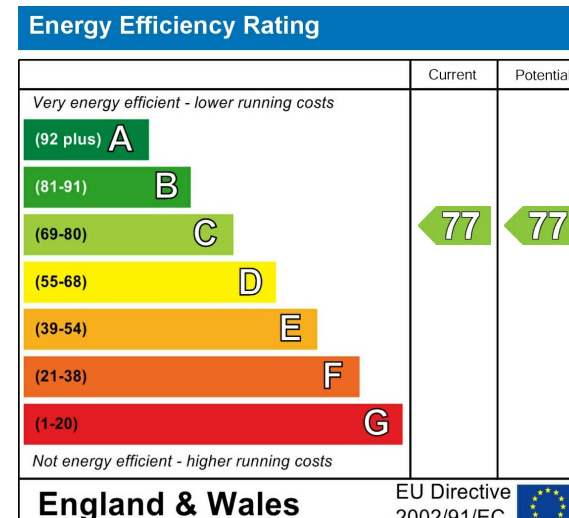
Remaining lease (In Years): 245

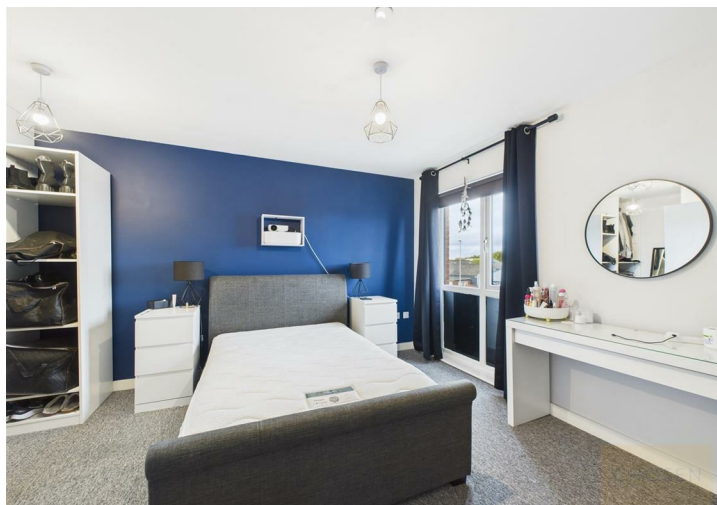
Yearly Ground Rent Cost: £0.00

Yearly Management Cost: £1663.68

Council tax band: A

EPC rating: C77







Bedroom
14'11" x 12'4"

Kitchen / Living Area
22'2" x 12'1"

Hallway
9'10" x 5'3"

Bathroom
7'0" x 5'6"

Approximate total area⁽¹⁾
523 ft²

(1) Excluding balconies and terraces

Calculations reference the RICS IPMS 3C standard. Measurements are approximate and not to scale. This floor plan is intended for illustration only.

GIRAFFE360