

CURRAN
BIRDS
+ COO

The Green, Findern
Derbyshire
£525,000



CURRAN BIRDS + CO

Welcome to CB+CO, where *dedication* meets *excellence*, and impeccable service is our hallmark.



VIEWS OVER VILLAGE GREEN - An extended, four double bedroom detached family home, offering spacious and well proportioned living accommodation and set within the heart of the sought after South Derbyshire village of Findern and having a delightful views towards the village green and church. This property has been beautifully maintained throughout and offers an interesting and versatile split level layout with three reception rooms, well appointed breakfast kitchen with dining area and separate utility room. Upstairs the property offers four double bedrooms with stunning contemporary shower room. The spacious primary bedroom also has built in wardrobes and high specification en-suite bathroom. Outside, this property stands on a generous plot set back from the road with extensive block paved driveway and double detached garage with potential office/store at the rear and there is a beautiful tiered landscaped rear garden.





The Detail

This spacious extended four double bedroom detached family home presents an interesting and versatile layout that is perfect for family living and is set within this delightful position within the heart of this sought after South Derbyshire village and offers a delightful outlook over the village green and towards the local church. This property has been beautifully maintained by the current vendor and has been presented to a tasteful neutral theme throughout. This property offers exciting potential for someone to put their own style on this family home with further potential to re-model or extend (subject to necessary planning consent)

The property offers two main floors with an interesting split level layout and offers a blend of spaciousness and functionality. Upon entering there is an entrance porch and hallway with a staircase lead to a variety of well-proportioned rooms. There is a well appointed wc, snug, spacious sitting room featuring a bay window and French doors to the rear garden, The heart of the home is the well appointed breakfast kitchen, which includes a range of fitted units, high-quality appliances and central dining island. There is also a separate utility room that provides access to the side driveway. The ground floor has stairs leading to the upper ground floor level and a spacious living room with feature fireplace and French doors opening out onto the rear garden.

Upstairs, the spacious primary bedroom benefits from built-in wardrobes and has a high specification en-suite bathroom with four piece suite. There is a further double bedroom on this level with superb contemporary shower room. There are further stairs leading to the upper first floor level with two further double bedroom both with built in wardrobes.

Outside, the property occupies this most generous plot with extensive block paved driveway and this continues to the side of the property leading to a large detached double garage with potential office/store to the rear. The are beautifully landscaped tiered gardens to the rear with vegetable plots and planting beds. There is also an area to the side of the garage with raised level planting beds and timber framed shed.







CURRAN BIRDS + CO

The Location

The Green is situated in the picturesque village of Findern, offering a peaceful setting with excellent connectivity. Overlooking the village green and the local church, the property enjoys a tranquil location while being close to essential amenities. Nearby Willington offers a selection of shops and pubs, while the renowned Mercia Marina, just a short distance away, provides a range of boutique shops, a restaurant, and a bar, perfect for leisure and dining.

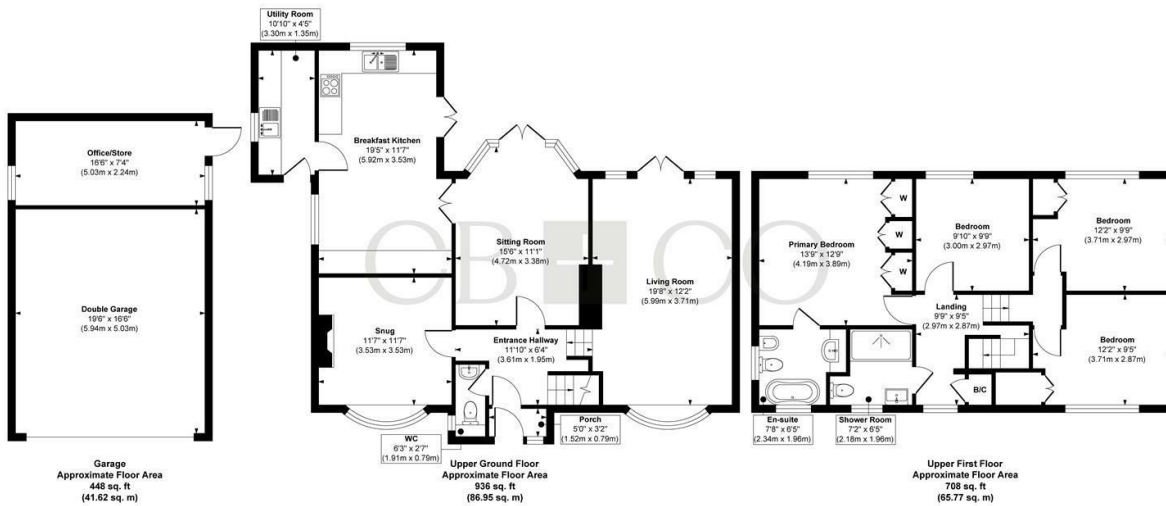
For those who enjoy outdoor activities, the local canal path offers a great route for walking. Findern's location also offers excellent access to major transport links, with the A38, A50, and M1 within easy reach. Additionally, the property is ideally positioned for those working at Toyota and Rolls-Royce, making it a convenient choice for professionals. Families will appreciate the proximity to local schools, further enhancing the appeal of this desirable village location.







The Green, Findern



Approx. Gross Internal Floor Area 2092 sq. ft / 194.34 sq. m (Including Garage)

Illustration for identification purposes only, measurements are approximate, not to scale.

Produced by Elements Property

The Particulars

- Spacious Extended Detached Family Home - Superb Split Level Layout
- Delightful Position in Heart of Village with views towards Village Green
- Over 2000 Square Foot including Double Garage & Office
- Porch Entrance Hallway, WC, Utility Room & Breakfast Kitchen
- Spacious Living Room, Sitting Room & Snug
- Four Double Bedrooms, Contemporary Shower Room & En-Suite Bathroom
- Generous Plot - Extensive Driveway & Landscaped Gardens
- Close to Open Countryside & Mercia Marina
- John Port School & Findern Primary School Catchment Areas
- No Chain Involved

Size

Approx 1644.00 sq ft

Energy Performance Certificate (EPC)

Rating D

Council Tax Band

F

CURRAN BIRDS + CO

Let's *Talk*

01332 411050
hello@curranbirds.co
curranbirds.co

The particulars above are a guide, not an offer or contract. Descriptions photographs and plans are not statements or representations of fact. Measurements are approximate and not to scale. Prospective purchasers must verify the accuracy of the information within the particulars. Curran Birds + Co does not give any representations or warranties; nor represent the Seller legally. Curran Birds + Co has no liability, for any costs, losses or expenses incurred by the Seller or a prospective buyer relating to the sales and buying transaction. Our Sales Disclaimer, trading names and privacy policy on how your data is processed and used is found in full on our website in our Privacy Statement.

© Curran Birds + Co 2024 All rights Reserved