

CURRAN
BIRDS
+ CO

College Mews
Derby
Guide Price £180,000



CURRAN BIRDS + CO

Welcome to CB+CO, where *dedication* meets *excellence*, and impeccable service is our hallmark.



STUNNING CONTEMPORARY STYLED TOWNHOUSE - A most stylish and comprehensively upgraded two double bedroom mid-townhouse with two parking spaces, set within this pleasant and most convenient cul-de-sac location close to Derby City Centre and the Royal Derby Hospital and would be ideally suited to young professionals or first time buyers. This truly immaculate modernised home offers stylish presentation, contemporary fittings and a high quality finish that really has to be viewed to be fully appreciated.

The property has been presented to a most stylish standard and has been upgraded with new carpets, flooring and superb contemporary styled dining kitchen and contemporary bathroom. The accommodation in brief comprises: entrance hallway, superb dining kitchen and spacious living room with french doors leading to the rear garden. Upstairs the property offers two generous double bedrooms and a stylish contemporary bathroom.

The property offers two parking spaces and includes driveway and front garden and there is a delightful landscaped enclosed south westerly facing rear garden.





The Detail

This beautiful two double bedroom mid townhouse has been comprehensively renovated to a most stylish contemporary theme with a quality of finish that really has to be viewed to be appreciated. The property offers a clean, modern interior and practical layout, set within this most convenient City Centre location.

The entrance hallway sets the tone, with grey wood grain effect flooring that continues throughout the ground floor to the living spaces. At the front of the property, the kitchen has been refitted with a stylish range of panelled units with black matt finish handles, quartz effect worktops and integrated appliances, creating a well-planned and functional cooking space with dining area and access to a useful understairs storage cupboard. There is a most spacious and stylish living room that provides access to the rear garden via French doors, with plenty of natural light from both the doors and side panel window.

Upstairs, the first floor landing leads to two generous double bedrooms each benefit from two windows, creating bright and comfortable rooms. The stunning contemporary bathroom has been finished with a clean, modern design — featuring a concealed cistern wc, wall-mounted basin with vanity drawers, LED backlit mirror and a panelled bath with matt black finish electric shower over the bath with limestone effect splashback panelling.

Outside, there's a private rear garden with planting borders and a gated rear access. The front includes a single-width driveway, while an additional parking space is available directly opposite.







CURRAN BIRDS + CO

The Location

Positioned in a peaceful cul-de-sac just off Great Northern Road, College Mews offers the benefit of quiet surroundings with city amenities close by. The Royal Derby Hospital and University of Derby are both easily accessible, making this a convenient spot for professionals and key workers. The property is conveniently located for the newly built Derby Cathedral Secondary School.

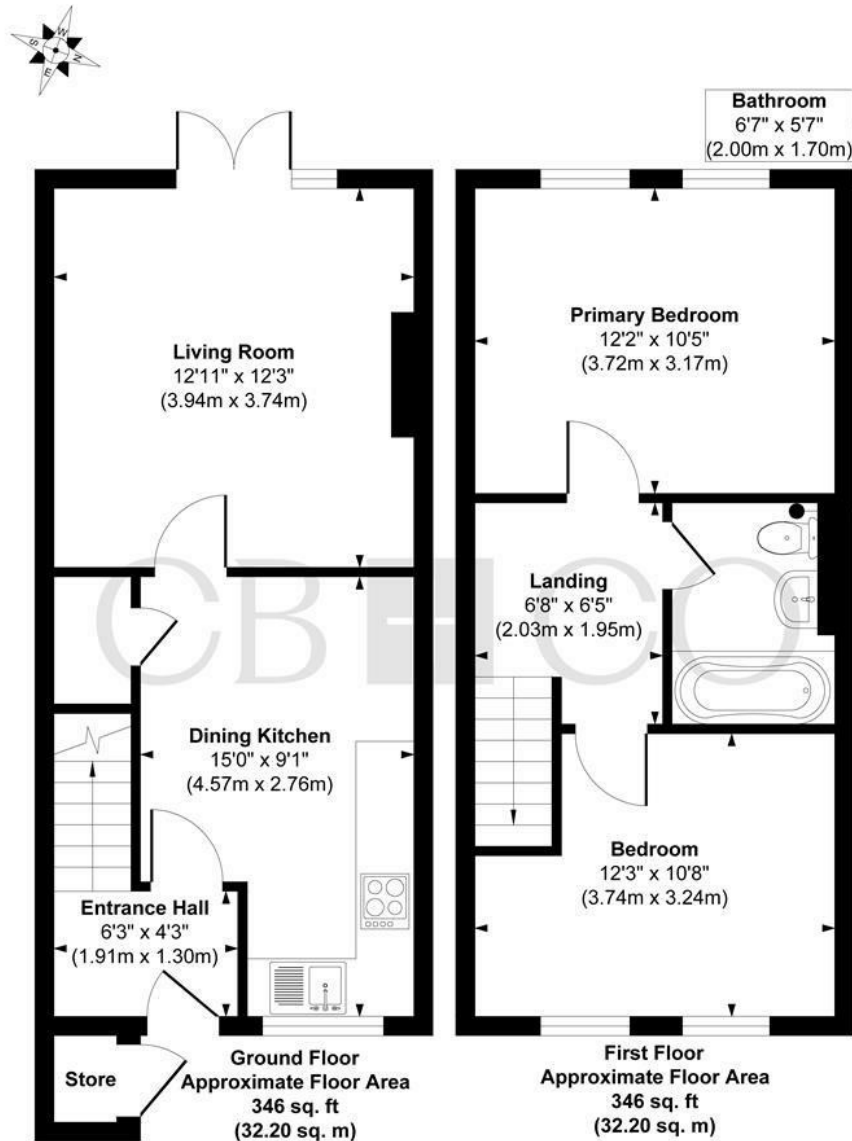
Local shops, cafés and gyms are within walking distance, along with green spaces such as Markeaton Park and Darley Park, which provide plenty of room for outdoor time. There's a growing mix of independent businesses in the area, alongside familiar high street names, offering a balance of community feel and everyday convenience. Whether heading into the city centre, working locally, or simply looking for a location with everything close to hand, College Mews fits the bill.







College Mews, Off Great Northern Road, Derby



The Particulars

- Stunning Two Double Bedroom Mid Townhouse
- Beautifully Renovated - High Quality Finish
- Ideal for Young Professionals & First Time Buyers
- Tasteful Presentation & Interior Design Styled
- Combination Boiler Gas Central Heating & uPVC Double Glazing
- Entrance Hallway, Contemporary Dining Kitchen & Spacious Living Room
- Two Generous Double Bedrooms & Contemporary Bathroom
- Driveway - Two Parking Spaces & Delightful Landscaped Rear Garden
- Close to Royal Derby Hospital & City Centre, and newly built Derby Cathedral School
- No Chain Involved - Viewing a Must!

Size

Approx 692.00 sq ft

Energy Performance Certificate (EPC)

Rating C

Council Tax Band

A

CURRAN BIRDS + CO

CURRAN BIRDS + CO

Let's *Talk*

01332 411050
hello@curranbirds.co
curranbirds.co

The particulars above are a guide, not an offer or contract. Descriptions photographs and plans are not statements or representations of fact. Measurements are approximate and not to scale. Prospective purchasers must verify the accuracy of the information within the particulars. Curran Birds + Co does not give any representations or warranties; nor represent the Seller legally. Curran Birds + Co has no liability, for any costs, losses or expenses incurred by the Seller or a prospective buyer relating to the sales and buying transaction. Our Sales Disclaimer, trading names and privacy policy on how your data is processed and used is found in full on our website in our Privacy Statement.

© Curran Birds + Co 2024 All rights Reserved